

## Elab Fluor® 488 Anti-Mouse CD8a Antibody[YTS169.4]

**Catalog Number:** AN00408L

**Note:** Centrifuge before opening to ensure complete recovery of vial contents.

### Description

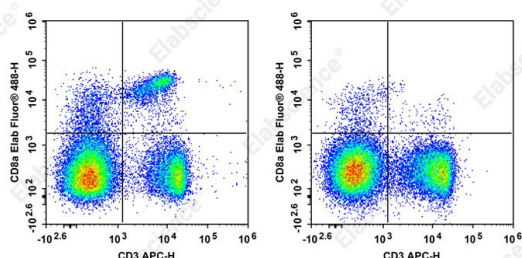
|                                |   |
|--------------------------------|---|
| <b>Reactivity</b>              | Mouse   |
| <b>Host</b>                    | Rat   |
| <b>Isotype</b>                 | Rat IgG2b, $\lambda$  |
| <b>Clone No.</b>               | YTS169.4  |
| <b>Isotype Control</b>         | Elab Fluor® 488 Rat IgG2b, $\lambda$ Isotype Control[G013B8] [Product AN00565L]   |
| <b>Conjugation</b>             | Elab Fluor® 488   |
| <b>Conjugation Information</b> | Elab Fluor® 488 is designed to be excited by the Blue laser (488 nm) and detected using an optical filter centered near 520 nm (e.g., a 525/40 nm bandpass filter). |
| <b>Storage Buffer</b>          | Phosphate buffered solution, pH 7.2, containing 0.09% stabilizer and 1% protein protectant.   |

### Applications

### Recommended usage

|            |  |
|------------|--|
| <b>FCM</b> | Each lot of this antibody is quality control tested by flow cytometric analysis. <b>The amount of the reagent is suggested to be used 5 <math>\mu</math>L of antibody per test (million cells in 100 <math>\mu</math>L staining volume or per 100 <math>\mu</math>L of whole blood).</b> Please check your vial before the experiment. Since applications vary, the appropriate dilutions must be determined for individual use. |
|------------|--|

### Data



C57BL/6 mouse splenocytes were stained with CD3 APC and CD8 (clone YTS169.4) Elab Fluor® 488 (left) or Rat IgG2b,  $\lambda$  Elab Fluor® 488 isotype control (right).

### Preparation & Storage

|                 |   |
|-----------------|---|
| <b>Storage</b>  | Keep as concentrated solution.<br>This product can be stored at 2-8°C for 12 months. Please protected from prolonged exposure to light and do not freeze. |
| <b>Shipping</b> | Ice bag   |

### Antigen Information

|                        |   |
|------------------------|---|
| <b>Alternate Names</b> | T8;Lyt2;Ly-2;T-cell surface glycoprotein Lyt-2;CD8a;CD8;AN00408 |
| <b>Uniprot ID</b>      | P01731  |
| <b>Gene ID</b>         | 12525   |

### For Research Use Only

Toll-free: 1-888-852-8623  
Web: [www.elabscience.com](http://www.elabscience.com)

Tel: 1-832-243-6086  
Email: [techsupport@elabscience.com](mailto:techsupport@elabscience.com)

Fax: 1-832-243-6017

Rev. V1.2

## Background

CD8, also known as Lyt-2, Ly-2, or T8, consists of disulfide-linked  $\alpha$  and  $\beta$  chains that form the  $\alpha$ (CD8a)/ $\beta$ (CD8b) heterodimer and  $\alpha/\alpha$  homodimer. CD8a is a 34 kD protein that belongs to the immunoglobulin family. The CD8  $\alpha/\beta$  heterodimer is expressed on the surface of most thymocytes and a subset of mature TCR  $\alpha/\beta$  T cells. CD8 expression on mature T cells is non-overlapping with CD4. The CD8  $\alpha/\alpha$  homodimer is expressed on a subset of  $\gamma/\delta$  TCR-bearing T cells, NK cells, intestinal intraepithelial lymphocytes, and lymphoid dendritic cells. CD8 is an antigen co-receptor on T cells that interacts with MHC class I on antigen-presenting cells or epithelial cells. CD8 promotes T cell activation through its association with the TCR complex and protein tyrosine kinase lck.