

SLC6A11 Polyclonal Antibody

catalog number: **E-AB-90294**

Note: Centrifuge before opening to ensure complete recovery of vial contents.

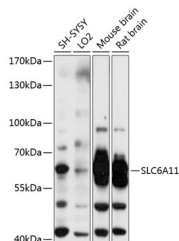
Description

Reactivity	Human;Mouse;Rat
Immunogen	Recombinant fusion protein of human SLC6A11
Host	Rabbit
Isotype	IgG
Purification	Affinity purification
Buffer	Phosphate buffered solution, pH 7.4, containing 0.05% stabilizer and 50% glycerol.

Applications

WB	1:500-1:2000
-----------	--------------

Data



Western blot analysis of extracts of various cell lines using SLC6A11 Polyclonal Antibody at 1:3000 dilution.

Observed-MV:62 kDa

Calculated-MV:23 kDa/70 kDa

Preparation & Storage

Storage	Store at -20°C Valid for 12 months. Avoid freeze / thaw cycles.
Shipping	The product is shipped with ice pack, upon receipt, store it immediately at the temperature recommended.

Background

The protein encoded by this gene is a sodium-dependent transporter that uptakes gamma-aminobutyric acid (GABA), an inhibitory neurotransmitter, which ends the GABA neurotransmission. Defects in this gene may result in epilepsy, behavioral problems, or intellectual problems. Two transcript variants encoding different isoforms have been found for this gene.

For Research Use Only