

## Recombinant Mouse CD59a/MAC-IP Protein (Fc Tag)

**Catalog Number:** PKSM040522

**Note:** Centrifuge before opening to ensure complete recovery of vial contents.

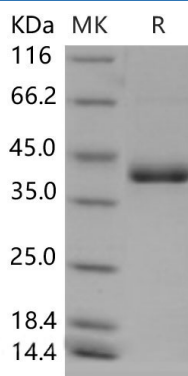
### Description

<b>Species</b>	Mouse
<b>Source</b>	HEK293 Cells-derived Mouse CD59a/MAC-IP protein Met 1-Lys 95, with an C-terminal hFc
<b>Calculated MW</b>	35.4 kDa
<b>Observed MW</b>	42 kDa
<b>Accession</b>	O55186
<b>Bio-activity</b>	Not validated for activity

### Properties

<b>Purity</b>	> 92 % as determined by reducing SDS-PAGE.
<b>Endotoxin</b>	< 1.0 EU per µg of the protein as determined by the LAL method.
<b>Storage</b>	Generally, lyophilized proteins are stable for up to 12 months when stored at -20 to -80 °C. Reconstituted protein solution can be stored at 4-8°C for 2-7 days. Aliquots of reconstituted samples are stable at < -20°C for 3 months.
<b>Shipping</b>	This product is provided as lyophilized powder which is shipped with ice packs.
<b>Formulation</b>	Lyophilized from sterile PBS, pH 7.4 Normally 5% - 8% trehalose, mannitol and 0.01% Tween 80 are added as protectants before lyophilization. Please refer to the specific buffer information in the printed manual.
<b>Reconstitution</b>	Please refer to the printed manual for detailed information.

### Data



> 92 % as determined by reducing SDS-PAGE.

### Background

### For Research Use Only

Protectin, a complement regulatory protein, also known as CD59, or MIRL (membrane inhibitor of reactive lysis) is a small protein that inhibits the complement membrane attack complex by binding C5b678 and preventing C9 from binding and polymerizing. The amino-terminal 25 amino acids represented a typical signal peptide sequence and the carboxy-terminal hydrophobic amino acids were characteristic for phosphatidylinositol-anchored proteins. It was found that the CD59/Protectin antigen is a small protein sometimes associated with larger components (45 and 80 kD) in urine. CD59/Protectin antigen was released from the surface of transfected COS cells by phosphatidylinositol-specific phospholipase C, demonstrating that it is attached to the cell membrane by means of a glycolipid anchor; it is therefore likely to be absent from the surface of affected erythrocytes in the disease paroxysmal nocturnal hemoglobinuria.