

SH2D2A Polyclonal Antibody

catalog number: **E-AB-92035**

Note: Centrifuge before opening to ensure complete recovery of vial contents.

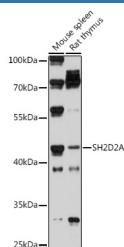
Description

Reactivity	Human;Mouse;Rat
Immunogen	A synthetic peptide of human SH2D2A
Host	Rabbit
Isotype	IgG
Purification	Affinity purification
Buffer	Phosphate buffered solution, pH 7.4, containing 0.05% stabilizer and 50% glycerol.

Applications

WB	1:500-1:2000
-----------	--------------

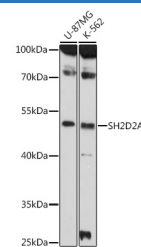
Data



Western blot analysis of extracts of various cell lines using SH2D2A Polyclonal Antibody at 1:1000 dilution.

Observed-MV:41 kDa/43 kDa

Calculated-MV:39 kDa/40 kDa/42 kDa/44 kDa



Western blot analysis of extracts of various cell lines using SH2D2A Polyclonal Antibody at 1:1000 dilution.

Observed-MV:41 kDa/43 kDa

Calculated-MV:39 kDa/40 kDa/42 kDa/44 kDa

Preparation & Storage

Storage	Store at -20°C Valid for 12 months. Avoid freeze / thaw cycles.
Shipping	The product is shipped with ice pack, upon receipt, store it immediately at the temperature recommended.

Background

This gene encodes an adaptor protein thought to function in T-cell signal transduction. A related protein in mouse is responsible for the activation of lymphocyte-specific protein-tyrosine kinase and functions in downstream signaling. Alternative splicing results in multiple transcript variants.

For Research Use Only