

## GLYATL2 Polyclonal Antibody

**catalog number:** E-AB-52873

**Note:** Centrifuge before opening to ensure complete recovery of vial contents.

### Description

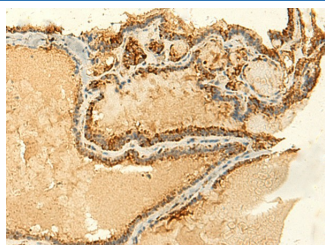
<b>Reactivity</b>	Human
<b>Immunogen</b>	Fusion protein of human GLYATL2
<b>Host</b>	Rabbit
<b>Isotype</b>	IgG
<b>Purification</b>	Antigen affinity purification
<b>Conjugation</b>	Unconjugated
<b>Buffer</b>	Phosphate buffered solution, pH 7.4, containing 0.05% stabilizer and 50% glycerol.

### Applications

### Recommended Dilution

<b>IHC</b>	1:50-1:300
------------	------------

### Data



Immunohistochemistry of paraffin-embedded Human thyroid cancer tissue using GLYATL2 Polyclonal Antibody at dilution of 1:50(×200)



Immunohistochemistry of paraffin-embedded Human tonsil tissue using GLYATL2 Polyclonal Antibody at dilution of 1:50(×200)

### Preparation & Storage

<b>Storage</b>	Store at -20°C Valid for 12 months. Avoid freeze / thaw cycles.
<b>Shipping</b>	The product is shipped with ice pack, upon receipt, store it immediately at the temperature recommended.

### Background

GLYATL2 (Glycine-N-Acyltransferase Like 2) is a Protein Coding gene. Among its related pathways are Amino Acid conjugation and Cytochrome P450 - arranged by substrate type. Gene Ontology (GO) annotations related to this gene include transferase activity, transferring acyl groups other than amino-acyl groups and glycine N-acyltransferase activity. An important paralog of this gene is GLYATL1B.