

ATAD1 Polyclonal Antibody

catalog number: E-AB-52454

Note: Centrifuge before opening to ensure complete recovery of vial contents.

Description

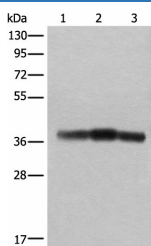
Reactivity	Human;Mouse;Rat
Immunogen	Fusion protein of human ATAD1
Host	Rabbit
Isotype	IgG
Purification	Antigen affinity purification
Conjugation	Unconjugated
Buffer	Phosphate buffered solution, pH 7.4, containing 0.05% stabilizer and 50% glycerol.

Applications

Recommended Dilution

WB	1:500-1:2000
IHC	1:50-1:300

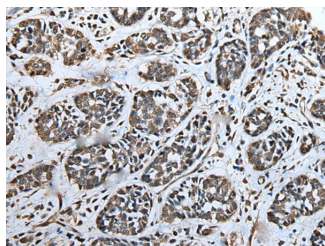
Data



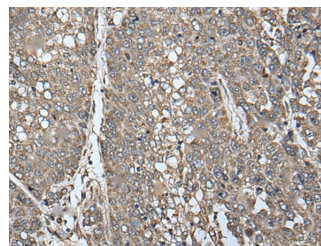
Western blot analysis of Rat brain tissue Mouse brain tissue and Human cerebrum tissue lysates using ATAD1 Polyclonal Antibody at dilution of 1:800

Observed-MV:Refer to figures

Calculated-MV:41 kDa



Immunohistochemistry of paraffin-embedded Human esophagus cancer tissue using ATAD1 Polyclonal Antibody at dilution of 1:65(×200)



Immunohistochemistry of paraffin-embedded Human liver cancer tissue using ATAD1 Polyclonal Antibody at dilution of 1:65(×200)

Preparation & Storage

Storage	Store at -20°C Valid for 12 months. Avoid freeze / thaw cycles.
Shipping	The product is shipped with ice pack,upon receipt,store it immediately at the temperature recommended.

Background

For Research Use Only

ATAD1 (ATPase Family AAA Domain Containing 1) is a Protein Coding gene. Diseases associated with ATAD1 include Hyperekplexia 4 and Hyperekplexia. Gene Ontology (GO) annotations related to this gene include ATPase activity and microtubule-severing ATPase activity. An important paralog of this gene is SPAST.