

Anti-Human cytomegalovirus(HCMV) Glycoprotein B/gB Monoclonal Antibody

catalog number: **E-AB-V1261**

Note: Centrifuge before opening to ensure complete recovery of vial contents.

Description

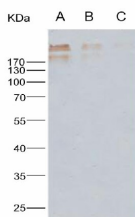
| | |
|---------------------|--|
| Reactivity | cytomegalovirus |
| Immunogen | Recombinant Human cytomegalovirus (HCMV) Glycoprotein B / gB Protein (His Tag) |
| Host | Mouse |
| Isotype | IgG1 |
| Clone | 11B10D3E4 |
| Purification | Protein A Affinity |
| Buffer | 0.2 µm filtered solution in PBS. |

Applications

Recommended Dilution

| | |
|--------------|---------------|
| WB | 1:1000-1:5000 |
| ELISA | 1:1000-1:2000 |

Data



Western Blot analysis of Recombinant Human cytomegalovirus (HCMV) Glycoprotein B / gB Protein (His Tag)(PKSV030208 with 100ng, 20ng and 4ng) using Anti-Human cytomegalovirus(HCMV) Glycoprotein B/gB Monoclonal Antibody at dilution of 1:1000.

Preparation & Storage

| | |
|-----------------|--|
| Storage | Store at -20°C Valid for 12 months. Avoid freeze / thaw cycles. |
| Shipping | The product is shipped with ice pack,upon receipt,store it immediately at the temperature recommended. |

Background

Cytomegalovirus (CMV) (human herpesvirus 5) glycoprotein B, also referred as CMV gB or gB, which belongs to the herpesviridae glycoprotein B family. It is a 97-amino acid glycoprotein encoded by the ORF of UL55. Cytomegalovirus Glycoprotein B protein is the most abundant component of the envelope, a target of neutralizing antibodies with at least two defined neutralizing epitopes and an essential replication component. Cytomegalovirus Glycoprotein B protein plays important roles in HCMV entry, cell-cell spread of internal virions, and fusion of infected cells. In addition, Cytomegalovirus Glycoprotein B protein is one envelope protein capable of heparin binding. It forms a physical association with host cell annexin II independent of the presence of calcium.

For Research Use Only