

Recombinant Rat E-selectin/Sele protein (His Tag)

Catalog Number: PDMR100086

Note: Centrifuge before opening to ensure complete recovery of vial contents.

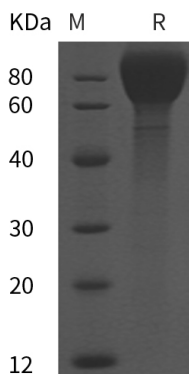
Description

Species	Rat
Source	HEK293 Cells-derived Rat E-selectin protein Met1-Pro494, with an C-terminal His
Calculated MW	54.2 kDa
Observed MW	85 kDa
Accession	P98105
Bio-activity	Not validated for activity

Properties

Purity	> 95% as determined by reducing SDS-PAGE.
Endotoxin	< 1.0 EU/mg of the protein as determined by the LAL method
Storage	Generally, lyophilized proteins are stable for up to 12 months when stored at -20 to -80 °C. Reconstituted protein solution can be stored at 4-8°C for 2-7 days. Aliquots of reconstituted samples are stable at < -20°C for 3 months.
Shipping	This product is provided as lyophilized powder which is shipped with ice packs.
Formulation	Lyophilized from a 0.2 µm filtered solution in PBS with 5% Trehalose and 5% Mannitol.
Reconstitution	It is recommended that sterile water be added to the vial to prepare a stock solution of 0.5 mg/mL. Concentration is measured by UV-Vis.

Data



> 95 % as determined by reducing SDS-PAGE.

Background

E-selectin, also known as endothelial leukocyte adhesion molecule-1 (ELAM-1) and CD62E, is an inducible adhesion molecule that is expressed on the surfaces of stimulated vascular endothelial cells and is sometimes involved in cancer cell metastasis. As a member of the LEC-CAM or selectin family, E-selectin recognises and binds to sialylated carbohydrates including members of the Lewis X and Lewis A families found on monocytes, granulocytes, and T-lymphocytes. E-selectin supports rolling and stable arrest of leukocytes on activated vascular endothelium, and furthermore, it was indicated that it can also transduce an activating stimulus via the MAPK cascade into the endothelial cell during leukocyte adhesion. E-selectin regulates adhesive interactions between certain blood cells and endothelium. The soluble form of E selectin (sE-selectin) is a marker of endothelial activation, and has a potential role in the pathogenesis of cardiovascular disease as raised levels have been found in hypertension, diabetes and hyperlipidemia, although its association in established atherosclerosis disease and its value as a prognostic factor is more controversial. soluble E-selectin is inversely associated with the muscular component of the left ventricle, thereby suggesting that the lack of such a reparative factor may be associated with cardiac remodeling in end-stage renal disease (ESRD) patients. In addition, this adhesion molecule appears to be involved in the pathogenesis of atherosclerosis.