

## Recombinant Human HCLS1 Protein (His Tag)

Catalog Number: PKSH032527

**Note:** Centrifuge before opening to ensure complete recovery of vial contents.

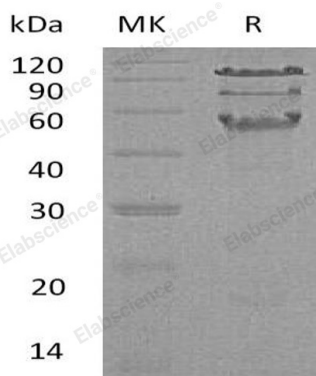
### Description

|                      |   |
|----------------------|---|
| <b>Species</b>       | Human   |
| <b>Source</b>        | HEK293 Cells-derived Human HCLS1 protein Met 1-Glu486, with an C-terminal His |
| <b>Calculated MW</b> | 55.0 kDa  |
| <b>Observed MW</b>   | 55-110 kDa  |
| <b>Accession</b>     | AAH16758.1  |
| <b>Bio-activity</b>  | Not validated for activity  |

### Properties

|                      |   |
|----------------------|---|
| <b>Purity</b>        | > 95 % as determined by reducing SDS-PAGE.  |
| <b>Concentration</b> | Subject to label value.   |
| <b>Endotoxin</b>     | < 1.0 EU per µg of the protein as determined by the LAL method.   |
| <b>Storage</b>       | Store at < -20°C, stable for 6 months. Please minimize freeze-thaw cycles.  |
| <b>Shipping</b>      | This product is provided as liquid. It is shipped at frozen temperature with blue ice/gel packs. Upon receipt, store it immediately at < -20°C. |
| <b>Formulation</b>   | Supplied as a 0.2 µm filtered solution of 20mM PB, 150mM NaCl, pH 7.4.  |

### Data



> 95 % as determined by reducing SDS-PAGE.

### Background

Hematopoietic lineage cell-specific protein (HCLS1) is a protein that in humans is encoded by the HCLS1 gene. It is expressed only in tissues and cells of hematopoietic origin. It is substrate of the antigen receptor-coupled tyrosine kinase and plays a role in antigen receptor signaling for both clonal expansion and deletion in lymphoid cells. It may also be involved in the regulation of gene expression.