

## GFAP Polyclonal Antibody

catalog number: E-AB-70040

**Note:** Centrifuge before opening to ensure complete recovery of vial contents.

### Description

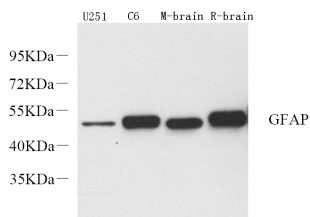
<b>Reactivity</b>	Human;Mouse;Rat
<b>Immunogen</b>	KLH conjugated Synthetic peptide corresponding to Mouse GFAP
<b>Host</b>	Rabbit
<b>Isotype</b>	IgG
<b>Purification</b>	Affinity purification
<b>Conjugation</b>	Unconjugated
<b>Buffer</b>	Phosphate buffered solution, pH 7.4, containing 0.05% stabilizer, 1% protein protectant and 50% glycerol.

### Applications

### Recommended Dilution

<b>WB</b>	1:1000-1:3000
<b>IHC</b>	1:300-1:800
<b>IF</b>	1:200-1:500

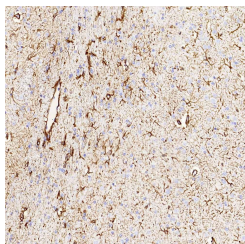
### Data



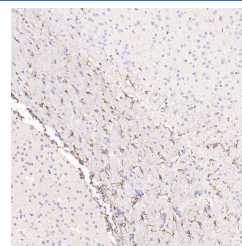
Western Blot analysis of various samples using GFAP Polyclonal Antibody at dilution of 1:2000.

**Observed-MW:49 kDa**

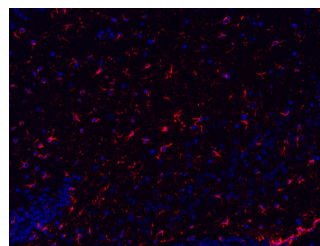
**Calculated-MW:49 kDa**



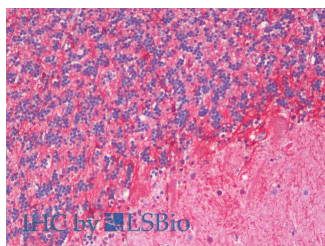
Immunohistochemistry analysis of paraffin-embedded rat brain using GFAP Polyclonal Antibody at dilution of 1:500.



Immunohistochemistry analysis of paraffin-embedded mouse brain using GFAP Polyclonal Antibody at dilution of 1:500.



Immunofluorescence analysis of paraffin-embedded mouse brain using GFAP Polyclonal Antibody at dilution of 1:300.



### For Research Use Only

Immunohistochemistry analysis of paraffin-embedded  
Human Cerebellum using GFAP Polyclonal  
Antibody(Elabscience Product Detected by Lifespan).

## Preparation & Storage

**Storage**

Store at -20°C Valid for 12 months. Avoid freeze / thaw cycles.

**Shipping**

The product is shipped with ice pack,upon receipt,store it immediately at the temperature recommended.

## Background

GFAP (Glial fibrillary acidic protein ),an intermediate-filament (IF) protein ,is specifically expressed in cells of astroglial lineage and is widely used to mark the astroglia in the brain. It is also used as a marker for intracranial and intraspinal tumors arising from astrocytes.