

## Recombinant Human RANTES Protein (GST&His Tag)

**Catalog Number:** PDEH100876

**Note:** Centrifuge before opening to ensure complete recovery of vial contents.

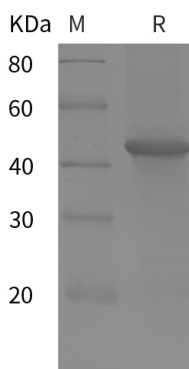
### Description

<b>Species</b>	Human
<b>Source</b>	E.coli-derived Human RANTES protein Pro25-Ser91, with an N-terminal GST & C-terminal His
<b>Calculated MW</b>	32.3 kDa
<b>Observed MW</b>	42 kDa
<b>Accession</b>	P13501
<b>Bio-activity</b>	Not validated for activity

### Properties

<b>Purity</b>	> 95% as determined by reducing SDS-PAGE.
<b>Endotoxin</b>	< 10 EU/mg of the protein as determined by the LAL method
<b>Storage</b>	Generally, lyophilized proteins are stable for up to 12 months when stored at -20 to -80°C. Reconstituted protein solution can be stored at 4-8°C for 2-7 days. Aliquots of reconstituted samples are stable at < -20°C for 3 months.
<b>Shipping</b>	This product is provided as lyophilized powder which is shipped with ice packs.
<b>Formulation</b>	Lyophilized from a 0.2 µm filtered solution in PBS with 5% Trehalose and 5% Mannitol.
<b>Reconstitution</b>	It is recommended that sterile water be added to the vial to prepare a stock solution of 0.5 mg/mL. Concentration is measured by UV-Vis.

### Data



SDS-PAGE analysis of Human RANTES proteins, 2 µg/lane of Recombinant Human RANTES proteins was resolved with SDS-PAGE under reducing conditions, showing bands at 42 kDa.

### Background

Human Chemokine (C-C Motif) Ligand 5 (CCL5) plays an active role in recruiting leukocytes into inflammatory sites. CCL5 is secreted by many cell types at inflammatory sites and it exerts a wide range of activities through the receptors CCR1, CCR3, CCR4, and CCR5. N-Terminal truncated CCL5/RANTES, Met-RANTES, and amino-oxypentane (AOP)-RANTES exhibit antagonist or partial agonist functions on their receptors. CCL5/RANTES attracts different subtypes of leukocytes into inflamed tissue and intervenes in a wide range of allergic and autoimmune diseases.

### For Research Use Only

Toll-free: 1-888-852-8623  
Web: [www.elabscience.com](http://www.elabscience.com)

Tel: 1-832-243-6086  
Email: [techsupport@elabscience.com](mailto:techsupport@elabscience.com)

Fax: 1-832-243-6017