

NIT2 Polyclonal Antibody

catalog number: **E-AB-16003**

Note: Centrifuge before opening to ensure complete recovery of vial contents.

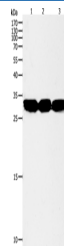
Description

Reactivity	Human;Mouse
Immunogen	Synthetic peptide of human NIT2
Host	Rabbit
Isotype	IgG
Purification	Affinity purification
Buffer	Phosphate buffered solution, pH 7.4, containing 0.05% stabilizer and 50% glycerol.

Applications

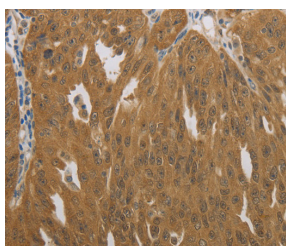
Applications	Recommended Dilution
WB	1:1000-1:5000
IHC	1:50-1:200

Data

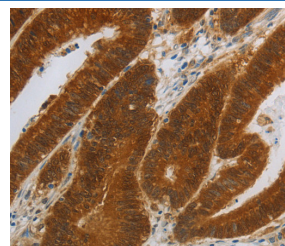


Western Blot analysis of Mouse liver and kidney tissue, RAW264.7 cell using NIT2 Polyclonal Antibody at dilution of 1:950

Calculated-MW:31 kDa



Immunohistochemistry of paraffin-embedded Human ovarian cancer using NIT2 Polyclonal Antibody at dilution of 1:40



Immunohistochemistry of paraffin-embedded Human colon cancer using NIT2 Polyclonal Antibody at dilution of 1:40

Preparation & Storage

Storage	Store at -20°C Valid for 12 months. Avoid freeze / thaw cycles.
Shipping	The product is shipped with ice pack, upon receipt, store it immediately at the temperature recommended.

Background

Has a omega-amidase activity. The role of omega-amidase is to remove potentially toxic intermediates by converting alpha-ketoglutarate and alpha-ketosuccinamate to biologically useful alpha-ketoglutarate and oxaloacetate, respectively. Overexpression decreases the colony-forming capacity of cultured cells by arresting cells in the G2 phase of the cell cycle.

For Research Use Only