

AF/LE Purified Anti-Human CD279 Antibody[EH12.2H7]

Catalog Number: GF12290

Note: Centrifuge before opening to ensure complete recovery of vial contents.

Description

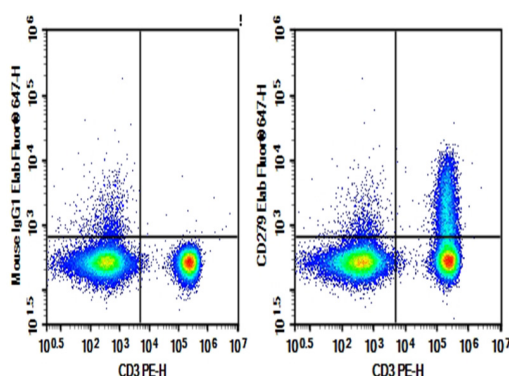
| | |
|--------------|---|
| Reactivity | Human |
| Immunogen | Recombinant Human CD279 protein |
| Host | Mouse |
| Isotype | Mouse IgG1, κ |
| Clone | EH12.2H7 |
| Purification | >98%, Protein A/G purified |
| Conjugation | None (AF/LE) |
| Buffer | Sterile PBS, pH 7.2. < 1.0 EU per mg of the antibody as determined by the LAL method. |

Applications

Recommended Dilution

| | |
|-----|---|
| FCM | 2 $\mu\text{g/mL}$ (0.5×10^6 - 1×10^6 cells) |
|-----|---|

Data



Human peripheral blood lymphocytes were stained with 0.2 μg AF/LE Purified Anti-Human CD279 Antibody[EH12.2H7] (Right) and 0.2 μg Mouse IgG1, κ Isotype Control (Left), followed by Elab Fluor® 647-conjugated Goat Anti-Mouse IgG Secondary Antibody, then anti-Human CD3 PE-conjugated Monoclonal Antibody.

Preparation & Storage

| | |
|----------|--|
| Storage | Store at 4°C valid for 12 months or -20°C valid for long term storage, avoid freeze / thaw cycles. This preparation contains no preservatives, thus it should be handled under aseptic conditions. |
| Shipping | Ice bag |

Background

Programmed Death-1 (PD-1) is a type I transmembrane protein belonging to the CD28/CTLA-4 family of immunoreceptors that mediate signals for regulating immune responses. Members of the CD28/CTLA-4 family have been shown to either promote T cell activation (CD28 and ICOS) or down-regulate T cell activation (CTLA-4 and PD-1).