

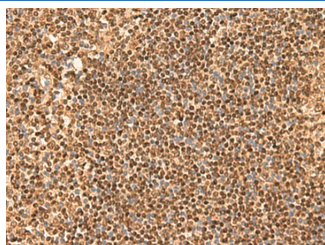
SIX6 Polyclonal Antibody

catalog number: E-AB-19997

Note: Centrifuge before opening to ensure complete recovery of vial contents.

Description	
Reactivity	Human;Mouse
Immunogen	Synthetic peptide of human SIX6
Host	Rabbit
Isotype	IgG
Purification	Antigen affinity purification
Conjugation	Unconjugated
Buffer	Phosphate buffered solution, pH 7.4, containing 0.05% stabilizer and 50% glycerol.
Applications	Recommended Dilution
IHC	1:50-1:300

Data



Immunohistochemistry of paraffin-embedded Human tonsil tissue using SIX6 Polyclonal Antibody at dilution of 1:50(×200)

Preparation & Storage	
Storage	Store at -20°C Valid for 12 months. Avoid freeze / thaw cycles.
Shipping	The product is shipped with ice pack, upon receipt, store it immediately at the temperature recommended.

Background

The protein encoded by this gene is a homeobox protein that is similar to the *Drosophila* 'sine oculis' gene product. This gene is found in a cluster of related genes on chromosome 14 and is thought to be involved in eye development. Defects in this gene are a cause of isolated microphthalmia with cataract type 2 (MCOPCT2). SIX6 (SIX Homeobox 6) is a Protein Coding gene. Diseases associated with SIX6 include Optic Disc Anomalies With Retinal And/Or Macular Dystrophy and Six6-Related Eye Disorders. Among its related pathways are Ectoderm Differentiation. GO annotations related to this gene include transcriptional activator activity, RNA polymerase II distal enhancer sequence-specific binding. An important paralog of this gene is SIX3.