

Elab Fluor® Violet 610 Anti-Mouse Ly6C Antibody[Monts 1]

Catalog Number: E-AB-F1121T

Note: Centrifuge before opening to ensure complete recovery of vial contents.

Description

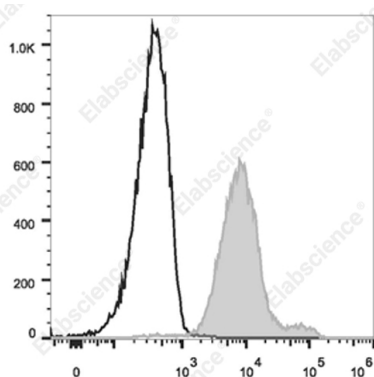
Reactivity	Mouse
Host	Rat
Isotype	Rat IgG2a, κ
Clone No.	Monts 1
Isotype Control	Elab Fluor® Violet 610 Rat IgG2a, κ Isotype Control[2A3] [Product E-AB-F09832T]
Conjugation	Elab Fluor® Violet 610
Conjugation Information	Elab Fluor® Violet 610 is designed to be excited by the violet laser (405 nm) and detected using an optical filter centered near 613 nm (e.g., a 615/20 nm bandpass filter).
Storage Buffer	Phosphate buffered solution, pH 7.2, containing 0.09% sodium azide and 1% BSA.

Applications

Recommended usage

FCM Each lot of this antibody is quality control tested by flow cytometric analysis. **The amount of the reagent is suggested to be used 5 μL of antibody per test (million cells in 100 μL staining volume or per 100 μL of whole blood).** Please check your vial before the experiment. Since applications vary, the appropriate dilutions must be determined for individual use.

Data



Staining of C57BL/6 murine bone marrow cells with Elab Fluor® Violet 610 Anti-Mouse Ly6C Antibody[Monts 1](filled gray histogram) or Elab Fluor® Violet 610 Rat IgG2a, κ Isotype Control (empty black histogram). Cells in the granulocytes gate were used for analysis.

Preparation & Storage

Storage	Keep as concentrated solution. This product can be stored at 2-8°C for 12 months. Please protected from prolonged exposure to light and do not freeze.
Shipping	Ice bag

Antigen Information

Alternate Names	locus C;Ly6C;Ly6c1;Ly6c2;Lymphocyte antigen 6 complex
Uniprot ID	P0CW03
Gene ID	17067

For Research Use Only

