

## SELL Polyclonal Antibody

catalog number: **E-AB-68322**

**Note:** Centrifuge before opening to ensure complete recovery of vial contents.

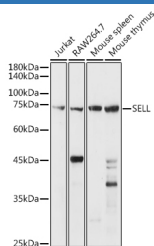
### Description

<b>Reactivity</b>	Human;Mouse;Rat
<b>Immunogen</b>	A synthetic peptide of human SELL
<b>Host</b>	Rabbit
<b>Isotype</b>	IgG
<b>Purification</b>	Affinity purification
<b>Buffer</b>	Phosphate buffered solution, pH 7.4, containing 0.05% stabilizer and 50% glycerol.

### Applications

<b>WB</b>	1:500-1:2000
<b>IHC</b>	1:50-1:200

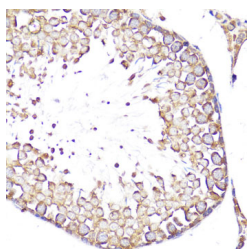
### Data



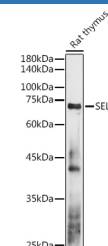
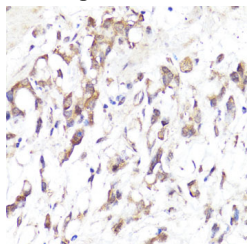
Western blot analysis of extracts of various cell lines using CD62L/L-Selectin Polyclonal Antibody at 1:1000 dilution.

**Observed-MW:75 kDa**

**Calculated-MW:42 kDa/43 kDa**



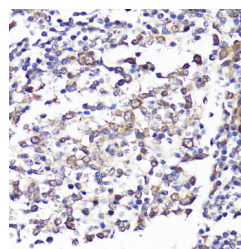
Immunohistochemistry of paraffin-embedded rat testis using CD62L/L-Selectin Polyclonal antibody at dilution of 1:100 (40x lens). Perform microwave antigen retrieval with 10 mM PBS buffer pH 7.2 before commencing with IHC staining protocol.



Western blot analysis of extracts of Rat thymus using CD62L/L-Selectin Polyclonal Antibody at 1:1000 dilution.

**Observed-MW:75 kDa**

**Calculated-MW:42 kDa/43 kDa**



Immunohistochemistry of paraffin-embedded human tonsil using CD62L/L-Selectin Polyclonal antibody at dilution of 1:100 (40x lens). Perform microwave antigen retrieval with 10 mM PBS buffer pH 7.2 before commencing with IHC staining protocol.

### For Research Use Only

Immunohistochemistry of paraffin-embedded human gastric cancer using CD62L/L-Selectin Polyclonal antibody at dilution of 1:100 (40x lens). Perform microwave antigen retrieval with 10 mM PBS buffer pH 7.2 before commencing with IHC staining protocol.

## Preparation & Storage

<b>Storage</b>	Store at -20°C Valid for 12 months. Avoid freeze / thaw cycles.
<b>Shipping</b>	The product is shipped with ice pack, upon receipt, store it immediately at the temperature recommended.

## Background

This gene encodes a cell surface adhesion molecule that belongs to a family of adhesion/homing receptors. The encoded protein contains a C-type lectin-like domain, a calcium-binding epidermal growth factor-like domain, and two short complement-like repeats. The gene product is required for binding and subsequent rolling of leucocytes on endothelial cells, facilitating their migration into secondary lymphoid organs and inflammation sites. Single-nucleotide polymorphisms in this gene have been associated with various diseases including immunoglobulin A nephropathy. Alternatively spliced transcript variants have been found for this gene.

## For Research Use Only