

HES2 Polyclonal Antibody

catalog number: E-AB-70254

Note: Centrifuge before opening to ensure complete recovery of vial contents.

Description

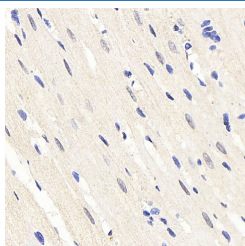
| | |
|---------------------|---|
| Reactivity | Rat |
| Immunogen | KLH conjugated Synthetic peptide corresponding to Mouse HES2 |
| Host | Rabbit |
| Isotype | IgG |
| Purification | Affinity purification |
| Buffer | Phosphate buffered solution, pH 7.4, containing 0.05% stabilizer, 1% protein protectant and 50% glycerol. |

Applications

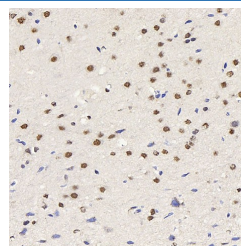
Recommended Dilution

| | |
|------------|-------------|
| IHC | 1:100-1:400 |
|------------|-------------|

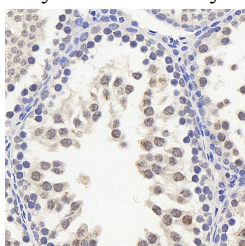
Data



Immunohistochemistry analysis of paraffin-embedded rat heart using HES2 Polyclonal Antibody at dilution of 1:200.



Immunohistochemistry analysis of paraffin-embedded rat brain using HES2 Polyclonal Antibody at dilution of 1:200.



Immunohistochemistry analysis of paraffin-embedded rat testis using HES2 Polyclonal Antibody at dilution of 1:200.

Preparation & Storage

| | |
|-----------------|--|
| Storage | Store at -20°C Valid for 12 months. Avoid freeze / thaw cycles. |
| Shipping | The product is shipped with ice pack, upon receipt, store it immediately at the temperature recommended. |

Background

HES2 (Hes Family BHLH Transcription Factor 2) is a Protein Coding gene. Among its related pathways are PI3K-Akt signaling pathway. Gene Ontology (GO) annotations related to this gene include transcription factor binding and double-stranded DNA binding.

For Research Use Only