

## Recombinant Mouse CD16 Protein (His Tag)

**Catalog Number:** PKSM040733

**Note:** Centrifuge before opening to ensure complete recovery of vial contents.

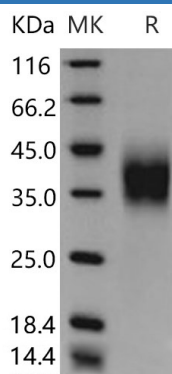
### Description

<b>Species</b>	Mouse
<b>Source</b>	HEK293 Cells-derived Mouse CD16 protein Met 1-Thr 215, with an C-terminal His
<b>Calculated MW</b>	22.6 kDa
<b>Accession</b>	P08508-1
<b>Bio-activity</b>	Immobilized mouse FCGR3-His at 10 µg/ml (100 µl/well) can bind biotinylated human IgG1 The EC <sub>50</sub> of biotinylated human IgG1 is 0.12-0.28 µg/ml.

### Properties

<b>Purity</b>	> 95 % as determined by reducing SDS-PAGE.
<b>Endotoxin</b>	< 1.0 EU per µg of the protein as determined by the LAL method.
<b>Storage</b>	Generally, lyophilized proteins are stable for up to 12 months when stored at -20 to -80 °C. Reconstituted protein solution can be stored at 4-8°C for 2-7 days. Aliquots of reconstituted samples are stable at < -20°C for 3 months.
<b>Shipping</b>	This product is provided as lyophilized powder which is shipped with ice packs.
<b>Formulation</b>	Lyophilized from sterile PBS, pH 7.4 Normally 5% - 8% trehalose, mannitol and 0.01% Tween 80 are added as protectants before lyophilization. Please refer to the specific buffer information in the printed manual.
<b>Reconstitution</b>	Please refer to the printed manual for detailed information.

### Data



> 95 % as determined by reducing SDS-PAGE.

### Background

Fc receptors bind the most common class of antibody, IgG, are called Fc gamma receptors (Fc&gamma;R). Fc&gamma;R is divided into three classes, Fc &gamma;RI (CD64), Fc &gamma;RII (CD32), and Fc &gamma;RIII (CD16). CD16 protein is a multifunctional, low/intermediate affinity receptor, which belongs to the immunoglobulin superfamily. It is found on the surface of natural killer cells, neutrophil polymorphonuclear leukocytes, monocytes and macrophages. Mouse CD16 is encoded by a single gene, while, human CD16 is expressed as two distinct forms (CD16a/Fc&gamma;RIIIa and CD16b/Fc&gamma;RIIIb) encoded by two different highly homologous genes in a cell type-specific manner. CD16 is involved in phagocytosis, secretion of enzymes, inflammatory mediators, antibody-dependent cellular cytotoxicity (ADCC), and clearance of immune complexes.

### For Research Use Only