

GLS Polyclonal Antibody

catalog number: E-AB-19340

Note: Centrifuge before opening to ensure complete recovery of vial contents.

Description

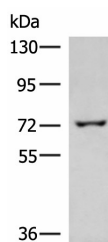
Reactivity	Human;Mouse;Rat
Immunogen	Synthetic peptide of human GLS
Host	Rabbit
Isotype	IgG
Purification	Antigen affinity purification
Conjugation	Unconjugated
Buffer	Phosphate buffered solution, pH 7.4, containing 0.05% stabilizer and 50% glycerol.

Applications

Recommended Dilution

WB	1:500-1:2000
IHC	1:50-1:200

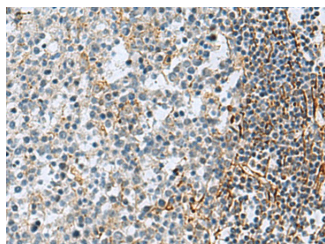
Data



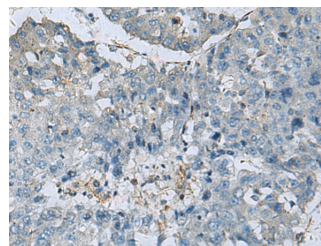
Western blot analysis of 293T cell lysate using GLS Polyclonal Antibody at dilution of 1:850

Observed-MW:Refer to figures

Calculated-MW:73 kDa



Immunohistochemistry of paraffin-embedded Human tonsil tissue using GLS Polyclonal Antibody at dilution of 1:70(×200)



Immunohistochemistry of paraffin-embedded Human liver cancer tissue using GLS Polyclonal Antibody at dilution of 1:70(×200)

Preparation & Storage

Storage	Store at -20°C Valid for 12 months. Avoid freeze / thaw cycles.
Shipping	The product is shipped with ice pack,upon receipt,store it immediately at the temperature recommended.

Background

For Research Use Only

GLS, also named as GLS1 and KIAA0838, belongs to the glutaminase family. It catalyzes the first reaction in the primary pathway for the renal catabolism of glutamine. Glutaminase-, glutamate-, and taurine-immunoreactive neurons develop neurofibrillary tangles in Alzheimer's disease. The glutaminase band in AA/C1 cells is more intense than in HT29 cells, in accordance with measurements of glutaminase activity, and had the same molecular mass of approx. 63 kDa. The bands for both cell lines are clearly different in size from both rat liver glutaminase (58 kDa) and rat kidney glutaminase (65 kDa). It also reveals a molecular weight of 83-84 kDa as a phosphate-dependent glutaminase. It has 3 isoforms named as KGA, GAM, GAC.