

Recombinant Human LAMTOR3/MP1 Protein (His Tag)

Catalog Number: PKSH032742

Note: Centrifuge before opening to ensure complete recovery of vial contents.

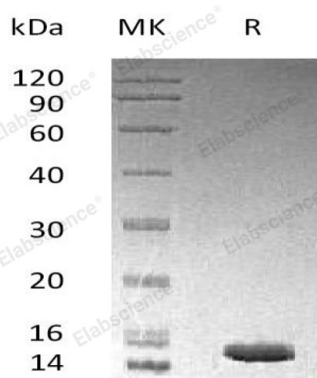
Description

Species	Human
Source	E.coli-derived Human LAMTOR3;MP1 protein Met 1-Val124, with an N-terminal His
Mol_Mass	15.8 kDa
Accession	Q9UHA4
Bio-activity	Not validated for activity

Properties

Purity	> 95 % as determined by reducing SDS-PAGE.
Endotoxin	< 1.0 EU per µg of the protein as determined by the LAL method.
Storage	Store at < -20°C, stable for 6 months. Please minimize freeze-thaw cycles.
Shipping	This product is provided as liquid. It is shipped at frozen temperature with blue ice/gel packs. Upon receipt, store it immediately at < - 20°C.
Formulation	Supplied as a 0.2 µm filtered solution of 20mM Tris-HCl, 100mM NaCl, 5mM DTT, 30% Glycerol, pH 8.0.
Reconstitution	Not Applicable

Data



> 95 % as determined by reducing SDS-PAGE.

Background

Mitogen-Activated Protein Kinase Scaffold Protein 1 (MAPKSP1) was identified as an interacting protein that belongs to the LAMTOR3 family. MAPKSP1 restricted to late endosomes by the mitogen-activated protein-binding protein-interacting protein, and binds specifically to MAP kinase kinase MAP2K1/MEK1, MAP kinase MAPK3/ERK1, and MAP kinase MAPK1/ERK2. MAPKSP1 interacts with MAP2K1/MEK1 and MAPK2 and enhances the activation of MAPK2, and thus is thought to function as an adaptor to enhance the efficiency of the MAP kinase cascade.