

CPLX3 Polyclonal Antibody

catalog number: **E-AB-90646**

Note: Centrifuge before opening to ensure complete recovery of vial contents.

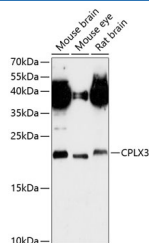
Description

Reactivity	Mouse;Rat
Immunogen	Recombinant fusion protein of human CPLX3
Host	Rabbit
Isotype	IgG
Purification	Affinity purification
Buffer	Phosphate buffered solution, pH 7.4, containing 0.05% stabilizer and 50% glycerol.

Applications

WB	1:500-1:2000
-----------	--------------

Data



Western blot analysis of extracts of various cell lines using
CPLX3 Polyclonal Antibody at 1:3000 dilution.

Observed-MV:18 kDa

Calculated-MV:17 kDa

Preparation & Storage

Storage	Store at -20°C Valid for 12 months. Avoid freeze / thaw cycles.
Shipping	The product is shipped with ice pack, upon receipt, store it immediately at the temperature recommended.

Background

Complexin that regulates SNARE protein complex-mediated synaptic vesicle fusion (By similarity. Required for the maintenance of synaptic ultrastructure in the adult retina (By similarity. Positively regulates synaptic transmission through synaptic vesicle availability and exocytosis of neurotransmitters at photoreceptor ribbon synapses in the retina (By similarity. Suppresses tonic photoreceptor activity and baseline 'noise' by suppression of Ca²⁺ vesicle tonic release and the facilitation of evoked synchronous and asynchronous Ca²⁺ vesicle release (By similarity.

For Research Use Only