

## KCTD10 Polyclonal Antibody

catalog number: **E-AB-90312**

**Note:** Centrifuge before opening to ensure complete recovery of vial contents.

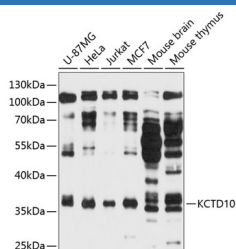
### Description

<b>Reactivity</b>	Human;Mouse;Rat
<b>Immunogen</b>	Recombinant fusion protein of human KCTD10
<b>Host</b>	Rabbit
<b>Isotype</b>	IgG
<b>Purification</b>	Affinity purification
<b>Buffer</b>	Phosphate buffered solution, pH 7.4, containing 0.05% stabilizer and 50% glycerol.

### Applications

<b>WB</b>	1:500-1:2000
-----------	--------------

### Data



Western blot analysis of extracts of various cell lines using KCTD10 Polyclonal Antibody at 1:3000 dilution.

**Observed-MV:36 kDa**

**Calculated-MV:17 kDa/32 kDa/35 kDa**

### Preparation & Storage

<b>Storage</b>	Store at -20°C Valid for 12 months. Avoid freeze / thaw cycles.
<b>Shipping</b>	The product is shipped with ice pack,upon receipt,store it immediately at the temperature recommended.

### Background

The protein encoded by this gene binds proliferating cell nuclear antigen (PCNA) and may be involved in DNA synthesis and cell proliferation. In addition, the encoded protein may be a tumor suppressor. Several protein-coding and non-protein coding transcript variants have been found for this gene.

### For Research Use Only