

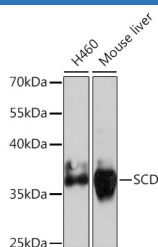
(KO Validated) SCD Polyclonal Antibody

catalog number: E-AB-66816

Note: Centrifuge before opening to ensure complete recovery of vial contents.

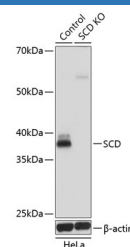
Description	
Reactivity	Human;Mouse;Rat
Immunogen	A synthetic peptide of human SCD (NP_005054.3).
Host	Rabbit
Isotype	IgG
Purification	Affinity purification
Conjugation	Unconjugated
Buffer	Phosphate buffered solution, pH 7.4, containing 0.05% stabilizer and 50% glycerol.
Applications	Recommended Dilution
WB	1:500-1:2000
IF	1:50-1:100

Data



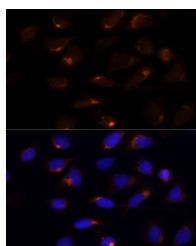
Western blot analysis of extracts of various cell lines using SCD Polyclonal Antibody at dilution of 1:1000.

Observed-MW:38 kDa
Calculated-MW:41 kDa



Western blot analysis of extracts from normal (control) and SCD knockout (KO) HeLa cells using SCD Polyclonal Antibody at dilution of 1:1000.

Observed-MW:38 kDa
Calculated-MW:41 kDa



Immunofluorescence analysis of U-2 OS cells using SCD Polyclonal Antibody at dilution of 1:100 (40x lens). Blue: DAPI for nuclear staining.

Preparation & Storage	
Storage	Store at -20°C Valid for 12 months. Avoid freeze / thaw cycles.
Shipping	The product is shipped with ice pack, upon receipt, store it immediately at the temperature recommended.
Background	

For Research Use Only

This gene encodes an enzyme involved in fatty acid biosynthesis, primarily the synthesis of oleic acid. The protein belongs to the fatty acid desaturase family and is an integral membrane protein located in the endoplasmic reticulum. Transcripts of approximately 3.9 and 5.2 kb, differing only by alternative polyadenylation signals, have been detected. A gene encoding a similar enzyme is located on chromosome 4 and a pseudogene of this gene is located on chromosome 17.