

## Vinculin Monoclonal Antibody

**catalog number: AN005300L**

**Note:** Centrifuge before opening to ensure complete recovery of vial contents.

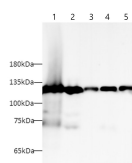
### Description

<b>Reactivity</b>	Human;Mouse;Rat
<b>Immunogen</b>	Recombinant human Vinculin protein expressed by E.coli
<b>Host</b>	Mouse
<b>Isotype</b>	IgG1
<b>Clone</b>	4D4
<b>Purification</b>	Protein A/G Purification
<b>Buffer</b>	PBS with 0.05% Proclin300, 1% protective protein and 50% glycerol, pH7.4

### Applications Recommended Dilution

<b>WB</b>	1:2000-1:4000
<b>IHC</b>	1:200-1:400
<b>IF</b>	1:200-1:400

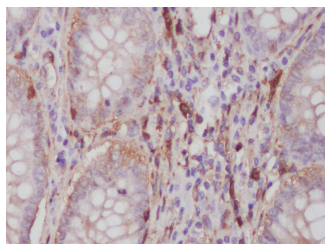
### Data



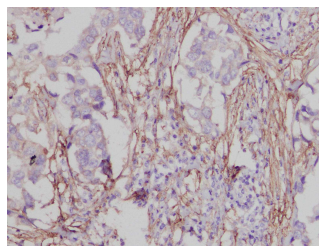
Western blot with Anti Vinculin Monoclonal Antibody at dilution of 1:3000. Lane 1: HeLa cell lysate, Lane 2: 293 cell lysate, Lane 3: Hep G2 cell lysate, Lane 4: NIH/3T3 cell lysate, Lane 5: Mouse heart tissue lysate, Lane 6: Rat heart tissue lysate.

**Observed-MW:126 kDa**

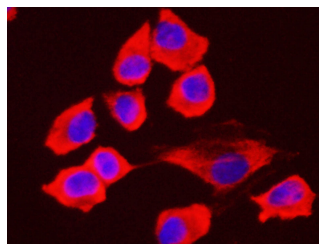
**Calculated-MW:124 kDa**



Immunohistochemistry of paraffin-embedded Human colon cancer using Vinculin Monoclonal Antibody at dilution of 1:1000.



Immunohistochemistry of paraffin-embedded Human breast cancer using Vinculin Monoclonal Antibody at dilution of 1:1000.



Immunofluorescence analysis of HeLa cells using Vinculin Monoclonal Antibody at dilution of 1:200.

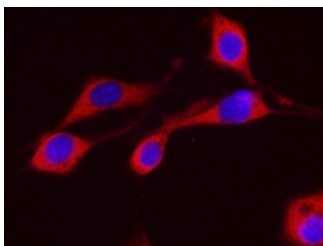
### For Research Use Only

Toll-free: 1-888-852-8623  
Web: [www.elabscience.com](http://www.elabscience.com)

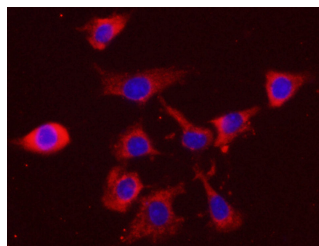
Tel: 1-832-243-6086  
Email: [techsupport@elabscience.com](mailto:techsupport@elabscience.com)

Fax: 1-832-243-6017

Rev. V1.4



Immunofluorescence analysis of NIH/3T3 cells using Vinculin Monoclonal Antibody at dilution of 1:200.



Immunofluorescence analysis of C6 cells using Vinculin Monoclonal Antibody at dilution of 1:200.

## Preparation & Storage

**Storage**

Store at -20°C Valid for 12 months. Avoid freeze / thaw cycles.

**Shipping**

The product is shipped with ice pack, upon receipt, store it immediately at the temperature recommended.

## Background

Vinculin belongs to the vinculin/alpha-catenin family. It is an actin filament (F-actin)-binding protein which involved in cell-matrix adhesion and cell-cell adhesion. Vinculin regulates cell-surface E-cadherin expression and potentiates mechanosensing by the E-cadherin complex. It may also play important roles in cell morphology and locomotion. Vinculin is a 117-kDa, 1,066-amino-acid protein which is ubiquitously expressed. Its splice variant, metavinculin (124 kDa), is muscle-specific.

## For Research Use Only