

CYR61 Polyclonal Antibody

catalog number: E-AB-11130

Note: Centrifuge before opening to ensure complete recovery of vial contents.

Description

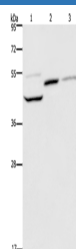
Reactivity	Human;Mouse;Rat
Immunogen	Recombinant protein of human CYR61
Host	Rabbit
Isotype	IgG
Purification	Affinity purification
Conjugation	Unconjugated
Buffer	Phosphate buffered solution, pH 7.4, containing 0.05% stabilizer and 50% glycerol.

Applications

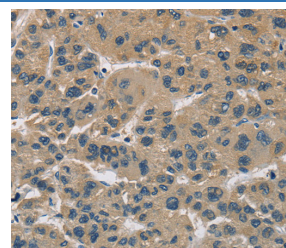
Recommended Dilution

WB	1:200-1:1000
IHC	1:50-1:200

Data

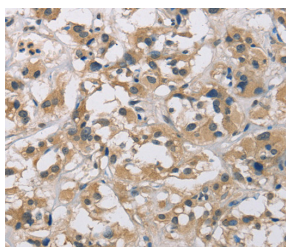


Western Blot analysis of Mouse heart, kidney and liver tissue using CYR61 Polyclonal Antibody at dilution of 1:350



Immunohistochemistry of paraffin-embedded Human liver cancer using CYR61 Polyclonal Antibody at dilution of 1:60

Calculated-MW:42 kDa



Immunohistochemistry of paraffin-embedded Human thyroid cancer using CYR61 Polyclonal Antibody at dilution of 1:60

Preparation & Storage

Storage	Store at -20°C Valid for 12 months. Avoid freeze / thaw cycles.
Shipping	The product is shipped with ice pack, upon receipt, store it immediately at the temperature recommended.

Background

The secreted protein encoded by this gene is growth factor-inducible and promotes the adhesion of endothelial cells. The encoded protein interacts with several integrins and with heparan sulfate proteoglycan. This protein also plays a role in cell proliferation, differentiation, angiogenesis, apoptosis, and extracellular matrix formation.

For Research Use Only