

PE/Cyanine 7 Anti-Mouse CD205 Antibody[NLDC-145]

Catalog Number: GFH00844H

Note: Centrifuge before opening to ensure complete recovery of vial contents.

Description

| | |
|-------------------------|--|
| Reactivity | Mouse |
| Host | Rat |
| Isotype | Rat IgG2a, κ |
| Clone No. | NLDC-145 |
| Isotype Control | PE/Cyanine7 Rat IgG2a, κ Isotype Control[2A3] [Product GFH09832H] |
| Conjugation | PE/Cyanine 7 |
| Conjugation Information | PE/Cyanine7 is designed to be excited by the Blue (488 nm), Green (532 nm) and yellow-green (561 nm) lasers and detected using an optical filter centered near 775 nm (e.g., a 780/60 nm bandpass filter). |
| Storage Buffer | Phosphate buffered solution, pH 7.2, containing 0.09% sodium azide. |

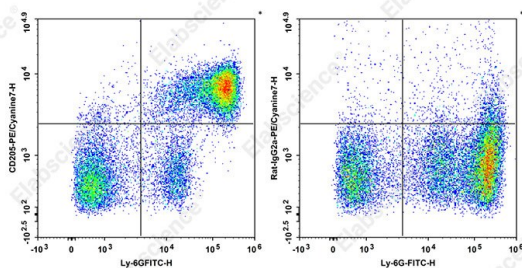
Applications

FCM

Recommended usage

Each lot of this antibody is quality control tested by flow cytometric analysis. **The amount of the reagent is suggested to be used 5 μ L of antibody per test (million cells in 100 μ L staining volume or per 100 μ L of whole blood).** Please check your vial before the experiment. Since applications vary, the appropriate dilutions must be determined for individual use.

Data



Staining of C57BL/6 murine bone marrow cells with FITC Anti-Mouse Ly-6G/Ly-6C Antibody and PE/Cyanine 7 Anti-Mouse CD205 Antibody[NLDC-145] (left) or PE/Cyanine 7 Rat IgG2a, κ Isotype Control (right). Total viable cells were used for analysis.

Preparation & Storage

| | |
|----------|---|
| Storage | Keep as concentrated solution. This product can be stored at 2-8°C for 12 months. Please protected from prolonged exposure to light and do not freeze. |
| Shipping | Ice bag |

Antigen Information

| | |
|-----------------|--|
| Alternate Names | CD205;Cd205流式抗体;CD205抗体;DEC-205;DEC205;Ly-75;Ly75;小鼠CD205;小鼠CD205流式抗体;GFH00844 |
|-----------------|--|

For Research Use Only

Tel: 400-999-2100

Web: www.elabscience.cn

Email: techsupport@elabscience.cn

Rev. V1.3

Uniprot ID

Q60767

Gene ID

17076

Background

CD205, also known as DEC-205, is a 205 kD integral membrane protein homologous to the macrophage mannose receptor. It is a type I cell surface protein that belong to the C-type lectin family. CD205 is expressed at high levels by dendritic cells and thymic epithelial cells. It is also expressed by a number of other cell types, such as B lymphocytes, macrophages, Langerhans cells, bone marrow stromal cells, granulocytes, epithelial cells of pulmonary airways, and the capillaries of the brain. CD205 is a novel endocytic receptor used by dendritic cells and thymic epithelial cells to direct captured antigens from the extracellular space to specialized antigen processing. It mediates antigen uptake and presentation and cross-presentation to T cells. It has been reported that CD205 acts as a recognition receptor for dying cells, potentially provides an important pathway for the uptake of self-antigen in the intrathymic environment, and is involved in peripheral tolerance. Antibody-mediated antigen-targeting via the DEC-205 receptor increases the efficiency of vaccination for T cell immunity.