

## PFN2 Polyclonal Antibody

**catalog number: E-AB-12624**

**Note:** Centrifuge before opening to ensure complete recovery of vial contents.

### Description

|                     |  |
|---------------------|--|
| <b>Reactivity</b>   | Human;Mouse;Rat  |
| <b>Immunogen</b>    | Synthetic peptide of human PFN2  |
| <b>Host</b>         | Rabbit   |
| <b>Isotype</b>      | IgG  |
| <b>Purification</b> | Affinity purification  |
| <b>Buffer</b>       | Phosphate buffered solution, pH 7.4, containing 0.05% stabilizer and 50% glycerol. |

### Applications

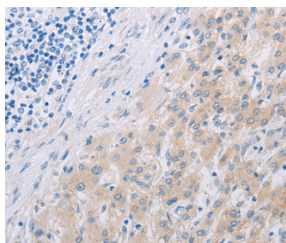
| Applications | Recommended Dilution |
|--------------|----------------------|
| <b>WB</b>    | 1:500-1:2000         |
| <b>IHC</b>   | 1:25-1:100           |

### Data

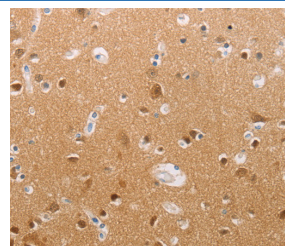


Western Blot analysis of Human fetal brain tissue using PFN2 Polyclonal Antibody at dilution of 1:450

**Calculated-MW:15 kDa**



Immunohistochemistry of paraffin-embedded Human liver cancer using PFN2 Polyclonal Antibody at dilution of 1:30



Immunohistochemistry of paraffin-embedded Human brain using PFN2 Polyclonal Antibody at dilution of 1:30

### Preparation & Storage

|                 |  |
|-----------------|--|
| <b>Storage</b>  | Store at -20°C Valid for 12 months. Avoid freeze / thaw cycles.  |
| <b>Shipping</b> | The product is shipped with ice pack, upon receipt, store it immediately at the temperature recommended. |

### Background

The protein encoded by this gene is a ubiquitous actin monomer-binding protein belonging to the profilin family. It is thought to regulate actin polymerization in response to extracellular signals. There are two alternatively spliced transcript variants encoding different isoforms described for this gene. Binds to actin and affects the structure of the cytoskeleton. At high concentrations, profilin prevents the polymerization of actin, whereas it enhances it at low concentrations. By binding to PIP2, it inhibits the formation of IP3 and DG.

### For Research Use Only