

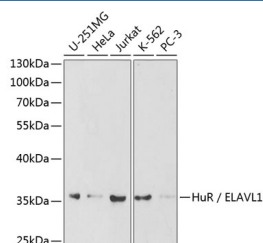
(KO Validated) HuR / ELAVL1 Polyclonal Antibody

catalog number: E-AB-60367

Note: Centrifuge before opening to ensure complete recovery of vial contents.

Description	
Reactivity	Human;Mouse;Rat
Immunogen	Recombinant fusion protein of human HuR / ELAVL1 (NP_001410.2).
Host	Rabbit
Isotype	IgG
Purification	Affinity purification
Conjugation	Unconjugated
Buffer	Phosphate buffered solution, pH 7.4, containing 0.05% stabilizer and 50% glycerol.
Applications	
WB	1:500-1:2000
IHC	1:100-1:200
IF	1:50-1:200

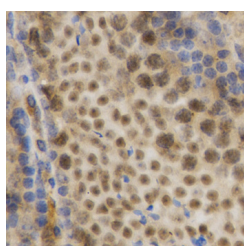
Data



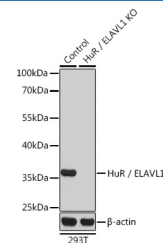
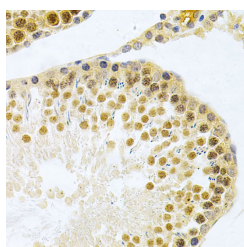
Western blot analysis of extracts of various cell lines using HuR / ELAVL1 Polyclonal Antibody at dilution of 1:1000.

Observed-MW:37 kDa

Calculated-MW:36 kDa/38 kDa



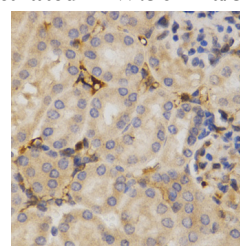
Immunohistochemistry of paraffin-embedded Mouse testis using HuR / ELAVL1 Polyclonal Antibody at dilution of 1:200 (40x lens).



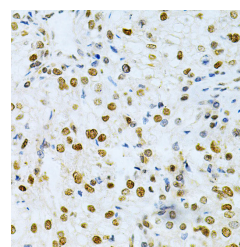
Western blot analysis of extracts from normal (control) and HuR / ELAVL1 knockout (KO) 293T cells using HuR / ELAVL1 Polyclonal Antibody at dilution of 1:1000.

Observed-MW:37 kDa

Calculated-MW:36 kDa/38 kDa



Immunohistochemistry of paraffin-embedded Mouse kidney using HuR / ELAVL1 Polyclonal Antibody at dilution of 1:200 (40x lens).



For Research Use Only

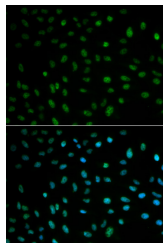
Tel: 400-999-2100

Web: www.elabscience.cn

Email: techsupport@elabscience.cn

Rev. V1.9

Immunohistochemistry of paraffin-embedded Rat testis using HuR / ELAVL1 Polyclonal Antibody at dilution of 1:200 (40x lens).
Immunohistochemistry of paraffin-embedded Human kidney cancer using HuR / ELAVL1 Polyclonal Antibody at dilution of 1:200 (40x lens).



Immunofluorescence analysis of MCF-7 cells using HuR / ELAVL1 Polyclonal Antibody

Preparation & Storage

Storage

Store at -20°C Valid for 12 months. Avoid freeze / thaw cycles.

Shipping

The product is shipped with ice pack, upon receipt, store it immediately at the temperature recommended.

Background

The protein encoded by this gene is a member of the ELAVL family of RNA-binding proteins that contain several RNA recognition motifs, and selectively bind AU-rich elements (AREs) found in the 3' untranslated regions of mRNAs. AREs signal degradation of mRNAs as a means to regulate gene expression, thus by binding AREs, the ELAVL family of proteins play a role in stabilizing ARE-containing mRNAs. This gene has been implicated in a variety of biological processes and has been linked to a number of diseases, including cancer. It is highly expressed in many cancers, and could be potentially useful in cancer diagnosis, prognosis, and therapy.