

## (KO Validated) TTC11/FIS1 Polyclonal Antibody

catalog number: E-AB-93308

**Note:** Centrifuge before opening to ensure complete recovery of vial contents.

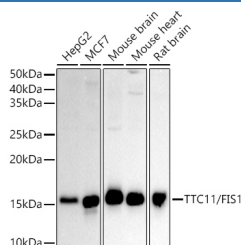
### Description

<b>Reactivity</b>	Human;Mouse;Rat
<b>Immunogen</b>	Recombinant fusion protein of human TTC11/FIS1
<b>Host</b>	Rabbit
<b>Isotype</b>	IgG
<b>Purification</b>	Affinity purification
<b>Buffer</b>	Phosphate buffered solution, pH 7.4, containing 0.05% stabilizer and 50% glycerol.

### Applications Recommended Dilution

<b>WB</b>	1:500-1:2000
-----------	--------------

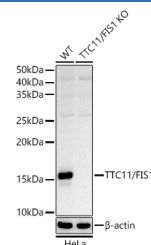
### Data



Western blot analysis of extracts of various lysates using TTC11/FIS1 Polyclonal Antibody at 1:500 dilution.

**Observed-MW:17 kDa**

**Calculated-MW:16 kDa**



Western blot analysis of extracts from wild type (WT) and TTC11/FIS1 knockout (KO) HeLa cells using TTC11/FIS1 Polyclonal Antibody at 1:500 dilution.

**Observed-MW:17 kDa**

**Calculated-MW:16 kDa**

### Preparation & Storage

<b>Storage</b>	Store at -20°C Valid for 12 months. Avoid freeze / thaw cycles.
<b>Shipping</b>	The product is shipped with ice pack, upon receipt, store it immediately at the temperature recommended.

### Background

The balance between fission and fusion regulates the morphology of mitochondria. TTC11 is a component of a mitochondrial complex that promotes mitochondrial fission (James et al., 2003 [PubMed 12783892]).[supplied by OMIM, Mar 2008]

### For Research Use Only