

## Recombinant Mouse EphB4/HTK Protein (Fc Tag)

**Catalog Number:** PKSM040599

**Note:** Centrifuge before opening to ensure complete recovery of vial contents.

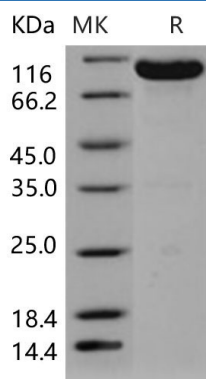
### Description

<b>Species</b>	Mouse
<b>Source</b>	HEK293 Cells-derived Mouse EphB4/HTK protein Met 1-Ala 539, with an C-terminal hFc
<b>Calculated MW</b>	84.7 kDa
<b>Observed MW</b>	110 kDa
<b>Accession</b>	P54761-1
<b>Bio-activity</b>	Immobilized mouse EPHB2-His at 10 µg/mL (100 µl/well) can bind mouse EPHB4-Fc, The EC <sub>50</sub> of mouse EPHB4-Fc is 15 ng/mL.

### Properties

<b>Purity</b>	> 97 % as determined by reducing SDS-PAGE.
<b>Endotoxin</b>	< 1.0 EU per µg of the protein as determined by the LAL method.
<b>Storage</b>	Generally, lyophilized proteins are stable for up to 12 months when stored at -20 to -80 °C. Reconstituted protein solution can be stored at 4-8°C for 2-7 days. Aliquots of reconstituted samples are stable at < -20°C for 3 months.
<b>Shipping</b>	This product is provided as lyophilized powder which is shipped with ice packs.
<b>Formulation</b>	Lyophilized from sterile PBS, pH 7.4 Normally 5% - 8% trehalose, mannitol and 0.01% Tween 80 are added as protectants before lyophilization. Please refer to the specific buffer information in the printed manual.
<b>Reconstitution</b>	Please refer to the printed manual for detailed information.

### Data



> 97 % as determined by reducing SDS-PAGE.

### Background

### For Research Use Only

Toll-free: 1-888-852-8623  
Web: [www.elabscience.com](http://www.elabscience.com)

Tel: 1-832-243-6086  
Email: [techsupport@elabscience.com](mailto:techsupport@elabscience.com)

Fax: 1-832-243-6017

Rev. V3.5

Ephrin type-B receptor 4 is a protein that in humans is encoded by the EPHB4 gene. It is a single-pass type I membrane protein belonging to the ephrin receptor subfamily of protein kinase superfamily. Members of the ephrin and Eph family are local mediators of cell function through largely contact-dependent processes in development and in maturity. Furthermore, EphB4 protein and the corresponding ligand Ephrin-B2 contribute to tumor growth in various human tumors. EphB4 protein has tumor suppressor activities and that regulation of cell proliferation, extracellular matrix remodeling, and invasive potential are important mechanisms of tumor suppression. Therefore, Ephrin-B2/EphB4 may be recognized as a novel prognostic indicator for cancers.