

SIGLEC15 Polyclonal Antibody

catalog number: E-AB-16819

Note: Centrifuge before opening to ensure complete recovery of vial contents.

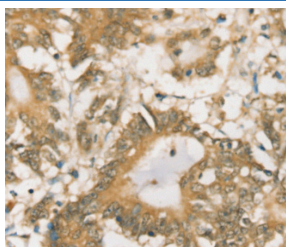
Description

Reactivity	Human
Immunogen	Synthetic peptide of human SIGLEC15
Host	Rabbit
Isotype	IgG
Purification	Affinity purification
Buffer	Phosphate buffered solution, pH 7.4, containing 0.05% stabilizer and 50% glycerol.

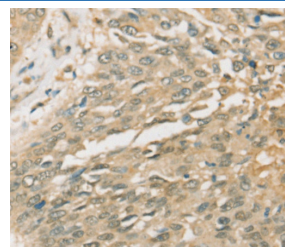
Applications Recommended Dilution

IHC	1:25-1:100
------------	------------

Data



Immunohistochemistry of paraffin-embedded Human colon cancer tissue using SIGLEC15 Polyclonal Antibody at dilution 1:35



Immunohistochemistry of paraffin-embedded Human lung cancer tissue using SIGLEC15 Polyclonal Antibody at dilution 1:35

Preparation & Storage

Storage	Store at -20°C Valid for 12 months. Avoid freeze / thaw cycles.
Shipping	The product is shipped with ice pack, upon receipt, store it immediately at the temperature recommended.

Background

Siglec-15 (sialic acid binding Ig-like lectin 15), also known as CD33L3, is a 328 amino acid single-pass type I membrane protein that contains one Ig-like C2-type domain and one Ig-like V-type domain. Expressed in dendritic and macrophage cells, Siglec-15 interacts with DAP10 and DAP12 and binds to sialylated glycoproteins. The gene encoding Siglec-15 maps to human chromosome 18, which houses over 300 protein-coding genes and contains nearly 76 million bases.

For Research Use Only