

## WDR6 Polyclonal Antibody

**catalog number: E-AB-92800**

**Note:** Centrifuge before opening to ensure complete recovery of vial contents.

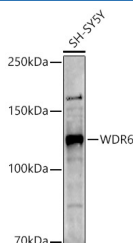
### Description

<b>Reactivity</b>	Human;Mouse
<b>Immunogen</b>	Recombinant fusion protein of human WDR6
<b>Host</b>	Rabbit
<b>Isotype</b>	IgG
<b>Purification</b>	Affinity purification
<b>Buffer</b>	Phosphate buffered solution, pH 7.4, containing 0.05% stabilizer and 50% glycerol.

### Applications

Applications	Recommended Dilution
<b>WB</b>	1:500-1:2000
<b>IF</b>	1:50-1:200

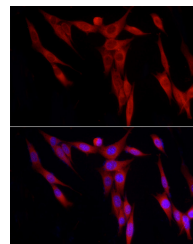
### Data



Western blot analysis of extracts of SH-SY5Y cells using WDR6 Polyclonal Antibody at 1:1000 dilution.

**Observed-MW:122 kDa**

**Calculated-MW:121 kDa**



Immunofluorescence analysis of NIH/3T3 cells using WDR6 Polyclonal Antibody at dilution of 1:200 (40x lens). Blue: DAPI for nuclear staining.

### Preparation & Storage

<b>Storage</b>	Store at -20°C Valid for 12 months. Avoid freeze / thaw cycles.
<b>Shipping</b>	The product is shipped with ice pack, upon receipt, store it immediately at the temperature recommended.

### Background

This gene encodes a member of the WD repeat protein family. WD repeats are minimally conserved regions of approximately 40 amino acids typically bracketed by gly-his and trp-aspartate (GH-WD), which may facilitate formation of heterotrimeric or multiprotein complexes. The encoded protein interacts with serine/threonine kinase 11, and is implicated in cell growth arrest. Alternative splicing results in multiple transcript variants encoding different isoforms.

### For Research Use Only