

PE/Elab Fluor® 594 Anti-Human/Mouse Integrin β7 Antibody[FIB21]

Catalog Number: AN00423P

Note: Centrifuge before opening to ensure complete recovery of vial contents.

Description

Reactivity	Human;Mouse
Host	Rat
Isotype	Rat IgG2b, κ
Clone No.	FIB21
Isotype Control	PE/Elab Fluor® 594 Rat IgG2b, κ Isotype Control[LTF-2] [Product E-AB-F09842P]
Conjugation	PE/Elab Fluor® 594
Conjugation Information	PE/Elab Fluor® 594 is designed to be excited by the blue (488 nm), Green (532 nm) and yellow-green (561 nm) lasers and detected using an optical filter centered near 620 nm (e.g., a 610/20 nm bandpass filter).
Storage Buffer	Phosphate buffered solution, pH 7.2, containing 0.09% stabilizer and 1% protein protectant.

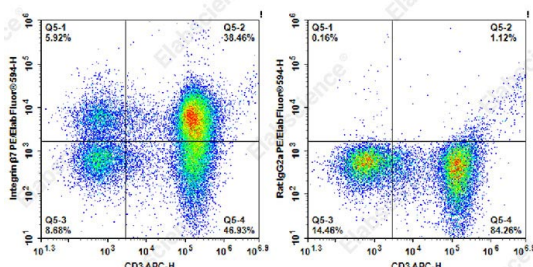
Applications

Recommended usage

FCM

Each lot of this antibody is quality control tested by flow cytometric analysis. **The amount of the reagent is suggested to be used 5 μL of antibody per test (million cells in 100 μL staining volume or per 100 μL of whole blood).** Please check your vial before the experiment. Since applications vary, the appropriate dilutions must be determined for individual use.

Data



Staining of normal human peripheral blood cells with APC

Anti-Human CD3 Antibody and PE/Elab Fluor® 594 Anti-Human/Mouse integrin β7 Antibody[FIB21] (left) or PE/Elab

Fluor® 594 Rat IgG2a Isotype Control (right). Cells in the lymphocytes gate were used for analysis.

Preparation & Storage

Storage	Keep as concentrated solution. This product can be stored at 2-8°C for 12 months. Please protected from prolonged exposure to light and do not freeze.
Shipping	Ice bag

Antigen Information

Alternate Names	β7 Integrin; integrin βp; ITGB7
-----------------	---------------------------------

For Research Use Only

Toll-free: 1-888-852-8623
Web: www.elabscience.com

Tel: 1-832-243-6086
Email: techsupport@elabscience.com

Fax: 1-832-243-6017

Rev. V1.8

Uniprot ID

P26010;P26011

Gene ID

3695;16421

Background

Integrin $\beta 7$ is a 130 kD glycoprotein also known as integrin βp . It is a member of the Ig superfamily. In association with integrin $\alpha 4$ or αE chain, $\beta 7$ forms $\alpha 4/\beta 7$ or $\alpha E/\beta 7$ heterodimer. $\alpha 4/\beta 7$ (CD49d/ $\beta 7$, LPAM-1) is expressed on the majority of peripheral lymphocytes, on small subsets of thymocytes, and bone marrow progenitors. LPAM-1 binds to several ligands, VCAM-1, MAdCAM-1 and fibronectin, and is involved in lymphocyte adhesion and some hematopoietic progenitor cells migration. $\alpha E/\beta 7$ (CD103/ $\beta 7$, $\alpha IEL/\beta 7$) is expressed on intestinal intraepithelial lymphocytes (IEL), dendritic epidermal T cells, T regulatory cells, a subset of CD8+ T cells in lymph nodes and lamina propria. CD103/ $\beta 7$ complex is thought to play a role in lymphocyte retention via interaction with its ligand E-Cadherin.

For Research Use Only

Toll-free: 1-888-852-8623
Web: www.elabscience.com

Tel: 1-832-243-6086
Email: techsupport@elabscience.com

Fax: 1-832-243-6017

Rev. V1.8