

AF/LE Purified Anti-Human CD20 Antibody[2H7]

catalog number: E-AB-F12120

Note: Centrifuge before opening to ensure complete recovery of vial contents.

Description

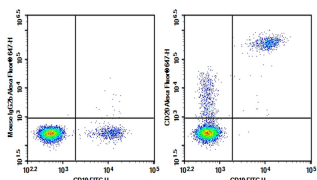
Reactivity	Human
Immunogen	Recombinant Human CD20 protein
Host	Mouse
Isotype	Mouse IgG2b, κ
Clone	2H7
Purification	>98%, Protein A/G purified
Conjugation	None (AF/LE)
buffer	Sterile PBS, pH 7.2. < 1.0 EU per mg of the antibody as determined by the LAL method

Applications

Recommended Dilution

FCM	2 $\mu\text{g/mL}$ (1×10^5 - 5×10^5 cells)
------------	---

Data



Human peripheral blood lymphocytes were stained with 0.2 μg AF/LE Purified Anti-Human CD20 Antibody[2H7] (Right) and 0.2 μg Mouse IgG2b, κ Isotype Control (Left), followed by Alexa Fluor[®] 647-conjugated Goat Anti-Mouse IgG Secondary Antibody, then anti-Human CD19 FITC-conjugated Monoclonal Antibody.

Preparation & Storage

Storage	Store at 4°C valid for 12 months or -20°C valid for long term storage, avoid freeze / thaw cycles. This preparation contains no preservatives, thus it should be handled under aseptic conditions.
Shipping	Ice bag

Background

CD20 is a 33-37 kD, four transmembrane spanning protein, also known as B1 and Bp35. CD20 is expressed on pre-B-cells, resting and activated B cells (not plasma cells), some follicular dendritic cells, and at low levels on a T cell subset. CD20 is heavily phosphorylated on activated B cells and malignant B cells. Homo-oligomeric complexes of CD20 are thought to form Ca^{2+} conductive ion channels in the plasma membrane of B cells. The CD20 molecule is involved in B-cell activation and is associated with various Src family kinases (Lyn, Lck, Fyn). It exists in a complex with MHC class I and II, CD53, CD81, and CD82.

For Research Use Only