

Recombinant Human LYPD3 Protein (His Tag)

Catalog Number: PKSH033352

Note: Centrifuge before opening to ensure complete recovery of vial contents.

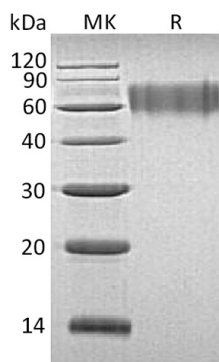
Description

Species	Human
Source	HEK293 Cells-derived Human LYPD3 protein Leu31-His286, with an C-terminal His
Calculated MW	27.9 kDa
Observed MW	55-75 kDa
Accession	O95274
Bio-activity	Not validated for activity

Properties

Purity	> 95 % as determined by reducing SDS-PAGE.
Endotoxin	< 1.0 EU per µg of the protein as determined by the LAL method.
Storage	Generally, lyophilized proteins are stable for up to 12 months when stored at -20 to -80 °C. Reconstituted protein solution can be stored at 4-8°C for 2-7 days. Aliquots of reconstituted samples are stable at < -20°C for 3 months.
Shipping	This product is provided as lyophilized powder which is shipped with ice packs.
Formulation	Lyophilized from a 0.2 µm filtered solution of 20mM PB, 150mM NaCl, pH 7.2. Normally 5% - 8% trehalose, mannitol and 0.01% Tween 80 are added as protectants before lyophilization.
Reconstitution	Please refer to the specific buffer information in the printed manual.

Data



> 95 % as determined by reducing SDS-PAGE.

Background

Ly6/PLAUR domain containing3 (LYPD-3) is a GPI-linked protein. The structure of LYPD-3 is similar to the urokinasetype plasminogen activator receptor (uPAR). LYPD-3 is a 6 -100 kDa molecule with variable cell type-specific N-O-linked glycosylation; mature human LYPD-3 contains two uPAR/Ly6 domains and a Ser/Thr/Pro-rich (STP) region includes a protease sensitive site . The interaction of LYPD-3 with Laminin 1 and 5 on neighboring cells promotes the adhesion; spreading; and migration of tumor cells. LYPD-3 additionally interacts with Galectin-3 and the anterior gradient proteins AG-2 and AG-3. LYPD-3 overexpression in non-small cell lung cancer is predictive of increased mortality.

For Research Use Only