

Recombinant Phospho-p53 (Ser15) Monoclonal Antibody

catalog number: **AN300367L**

Note: Centrifuge before opening to ensure complete recovery of vial contents.

Description

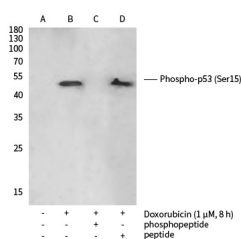
Reactivity	Human
Immunogen	A synthetic phosphopeptide corresponding to residues around Ser15 of the Human Phospho-p53
Host	Rabbit
Isotype	IgG
Clone	11A5
Purification	Protein A
Buffer	10 mM sodium HEPES, 150 mM NaCl, 100 µg/mL protein protectant, 50% glycerol, pH 7.5

Applications

Recommended Dilution

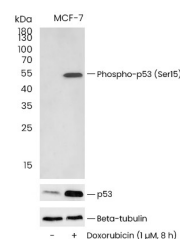
WB	1:1000-1:5000
-----------	---------------

Data



Western blot analysis of extracts from MCF-7, untreated (line A); treated with Doxorubicin (1 µM, 8 h), without peptide (line B) or antigen-specific phosphopeptide (line C) or antigen-specific peptide (line D) using Phospho-p53 (Ser15) rabbit monoclonal Antibody at 1:2000 dilution.. (Validation Experiment)

Observed-MW:43 kDa
Calculated-MW:43 kDa



Western blot analysis of extracts from MCF-7, untreated (-) or treated with Doxorubicin (1 µM, 8 h) (+), using Phospho-p53 (Ser15) Antibody, Rabbit Mab at 1:2000 dilution. (upper) or Anti-p53 Antibody, Rabbit Monoclonal (middle) at 1:200 dilution. or Beta-Tubulin Loading Control Antibody, Mouse Mab at 1:20000 dilution..

Observed-MW:43 kDa
Calculated-MW:43 kDa

Preparation & Storage

Storage	This antibody can be stored at 2°C-8°C for one month without detectable loss of activity. Antibody products are stable for twelve months from date of receipt when stored at -20°C to -80°C. Preservative-Free. Avoid repeated freeze-thaw cycles.
Shipping	Ice bag

Background

The p53 tumor suppressor protein is a multi-functional transcription factor that regulates cellular decisions regarding proliferation, cell cycle checkpoints, and apoptosis. The importance of p53 is underscored by its mutation in over 50% of human cancers. Mice that lack one or both copies of p53 also showed an increased incidence of tumors, which makes the p53 deficient mouse a model system for studying cancer generation and progression.

For Research Use Only