

STX10 Polyclonal Antibody

catalog number: E-AB-15434

Note: Centrifuge before opening to ensure complete recovery of vial contents.

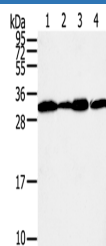
Description

Reactivity	Human
Immunogen	Recombinant protein of human STX10
Host	Rabbit
Isotype	IgG
Purification	Affinity purification
Buffer	Phosphate buffered solution, pH 7.4, containing 0.05% stabilizer and 50% glycerol.

Applications

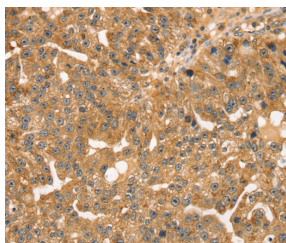
Applications	Recommended Dilution
WB	1:1000-1:5000
IHC	1:30-1:150

Data

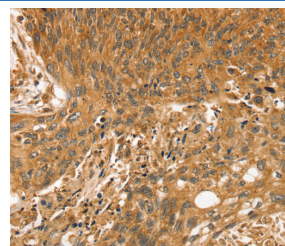


Western Blot analysis of A375, A431, lovo and hela cell using STX10 Polyclonal Antibody at dilution of 1:800

Calculated-MW:28 kDa



Immunohistochemistry of paraffin-embedded Human breast cancer using STX10 Polyclonal Antibody at dilution of 1:35



Immunohistochemistry of paraffin-embedded Human esophagus cancer using STX10 Polyclonal Antibody at dilution of 1:35

Preparation & Storage

Storage	Store at -20°C Valid for 12 months. Avoid freeze / thaw cycles.
Shipping	The product is shipped with ice pack, upon receipt, store it immediately at the temperature recommended.

Background

This gene belongs to the syntaxin family and encodes a soluble N-ethylmaleimide sensitive factor attachment protein receptor (SNARE). The encoded protein is involved in docking and fusion events at the Golgi apparatus. Alternative splicing results in multiple transcript variants.

For Research Use Only