

Recombinant Human PVRL2/Nectin-2/CD112 (C-mIgG2a Fc)

Catalog Number: PKSH034051



Note: Centrifuge before opening to ensure complete recovery of vial contents.

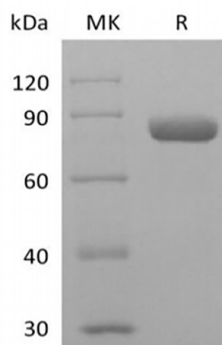
Description

Species	Human
Mol_Mass	62.6 kDa
Accession	Q92692-2
Bio-activity	Not validated for activity

Properties

Purity	> 95 % as determined by reducing SDS-PAGE.
Endotoxin	< 1.0 EU per µg of the protein as determined by the LAL method.
Storage	Generally, lyophilized proteins are stable for up to 12 months when stored at -20 to -80 °C. Reconstituted protein solution can be stored at 4-8°C for 2-7 days. Aliquots of reconstituted samples are stable at < -20°C for 3 months.
Shipping	This product is provided as lyophilized powder which is shipped with ice packs.
Formulation	Lyophilized from a 0.2 µm filtered solution of PBS, pH 7.4. Normally 5% - 8% trehalose, mannitol and 0.01% Tween 80 are added as protectants before lyophilization. Please refer to the specific buffer information in the printed manual.
Reconstitution	Please refer to the printed manual for detailed information.

Data



> 95 % as determined by reducing SDS-PAGE.

Background

CD112 is a type I transmembrane glycoprotein belonging to the Immunoglobulin superfamily. It comprises one Ig-like V-type domain and two Ig-like C2-type domains in the extracellular region. The V domain is believed to mediate nectin binding to its ligands. Nectin2 is known to bind the pseudorabies virus, and herpes simplex virus2 (HSV2), involving in cell to cell spreading of these viruses. It does not bind poliovirus. As a homophilic adhesion molecule, CD112 is found concentrated in adherens junctions, and exists on neurons, endothelial cells, epithelial cells and fibroblasts. CD112 has been identified as the ligand for DNAM-1 (CD226), and the interaction of CD226/CD112 mediates cytotoxicity and cytokine secretion by T and NK cells. The costimulatory responses may be a critical component in allergic reactions and may therefore become targets for anti-allergic therapy.

For Research Use Only

A Reliable Research Partner in Life Science and Medicine
Tel: 400-999-2100

Email: techsupport@elabscience.cn

Web: www.elabscience.cn

Rev. V3.2