

# INPP5B Polyclonal Antibody

Catalog Number:E-AB-18115



**Note:** Centrifuge before opening to ensure complete recovery of vial contents.

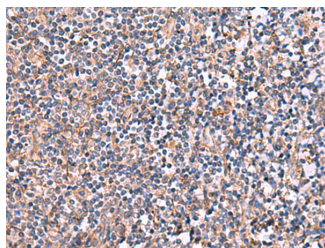
## Description

|                     |                                                        |
|---------------------|--------------------------------------------------------|
| <b>Reactivity</b>   | Human, Mouse                                           |
| <b>Immunogen</b>    | Synthetic peptide of human INPP5B                      |
| <b>Host</b>         | Rabbit                                                 |
| <b>Isotype</b>      | IgG                                                    |
| <b>Purification</b> | Antigen affinity purification                          |
| <b>Conjugation</b>  | Unconjugated                                           |
| <b>Formulation</b>  | PBS with 0.05% NaN <sub>3</sub> and 40% Glycerol,pH7.4 |

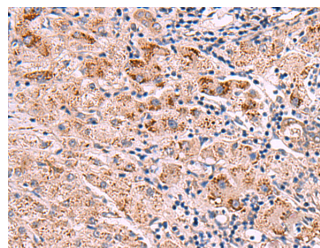
## Applications Recommended Dilution

|              |                |
|--------------|----------------|
| <b>IHC</b>   | 1:30-1:150     |
| <b>ELISA</b> | 1:5000-1:10000 |

## Data



Immunohistochemistry of paraffin-embedded Human tonsil tissue using INPP5B Polyclonal Antibody at dilution of 1:40(×200)



Immunohistochemistry of paraffin-embedded Human liver cancer tissue using INPP5B Polyclonal Antibody at dilution of 1:40(×200)

## Preparation & Storage

**Storage** Store at -20°C. Avoid freeze / thaw cycles.

## Background

This gene encodes a member of a family of inositol polyphosphate-5-phosphatases. These enzymes function in the regulation of calcium signaling by inactivating inositol phosphates. The encoded protein is localized to the cytosol and mitochondria, and associates with membranes through an isoprenyl modification near the C-terminus. Alternatively spliced transcript variants of this gene have been described.

## For Research Use Only

A Reliable Research Partner in Life Science and Medicine

Toll-free: 1-888-852-8623

Web: [www.elabscience.com](http://www.elabscience.com)

Tel: 1-832-243-6086

Email: [techsupport@elabscience.com](mailto:techsupport@elabscience.com)

Fax: 1-832-243-6017