

BCL-x Polyclonal Antibody

catalog number: **E-AB-30640**

Note: Centrifuge before opening to ensure complete recovery of vial contents.

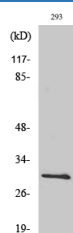
Description

Reactivity	Human;Mouse;Rat
Immunogen	Synthesized peptide derived from human Bcl-x around the non-phosphorylation site of Thr47.
Host	Rabbit
Isotype	IgG
Purification	Affinity purification
Buffer	Phosphate buffered solution, pH 7.4, containing 0.05% stabilizer, 0.5% protein protectant and 50% glycerol.

Applications

Applications	Recommended Dilution
WB	1:500-1:2000
IHC	1:100-1:300
IF	1:200-1:1000

Data



Western Blot analysis of 293T cells using Bcl-x Polyclonal

Antibody at dilution of 1:500.

Observed-MW:30 kDa

Calculated-MW:26 kDa

Preparation & Storage

Storage	Store at -20°C Valid for 12 months. Avoid freeze / thaw cycles.
Shipping	The product is shipped with ice pack, upon receipt, store it immediately at the temperature recommended.

Background

Bcl x is a member of the Bcl 2 family of proteins, which function as regulators of apoptosis. It may provide neuroprotection against ischemic brain injury. Bcl x has two isoforms, Bcl xl (long) a 241 amino acid protein and Bcl xs (short) a 178 amino acid protein lacking a 63 amino acid domain that is well conserved among members of the Bcl2 family. Isoform Bcl-X(L) anti-apoptotic activity is inhibited by association with SIVA isoform 1. Inhibits activation of caspases. Appears to regulate cell death by blocking the voltage-dependent anion channel (VDAC) by binding to it and preventing the release of the caspase activator, cytochrome c, from the mitochondrial membrane. The Bcl-X(S) isoform promotes apoptosis.

For Research Use Only