

Recombinant Lamin A/C Monoclonal Antibody

catalog number: E-AB-81577

Note: Centrifuge before opening to ensure complete recovery of vial contents.

Description

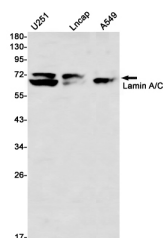
Reactivity	Human;Mouse
Immunogen	A synthetic peptide of human Lamin A/C
Host	Rabbit
Isotype	IgG
Clone	R07-115
Purification	Affinity Purified
Buffer	50mM Tris-Glycine(pH 7.4), 0.15M NaCl, 40% Glycerol, 0.05% stabilizer and 0.05% protective protein.

Applications

Recommended Dilution

WB	1:1000-1:2000
IHC	1:50-1:100

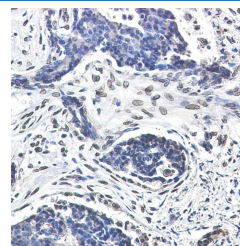
Data



Western blot detection of Lamin A/C in U251, Lncap, A549 using Lamin A/C Rabbit mAb(1:1000 diluted)

Observed-MW:74 /63 kDa

Calculated-MW:74 kDa



Immunohistochemistry of Lamin A/C in paraffin-embedded Human breast cancer tissue using Lamin A/C Rabbit mAb at dilution 1:50

Preparation & Storage

Storage	Store at -20°C Valid for 12 months. Avoid freeze / thaw cycles.
Shipping	The product is shipped with ice pack, upon receipt, store it immediately at the temperature recommended.

Background

The nuclear lamina consists of a two-dimensional matrix of proteins located next to the inner nuclear membrane. The lamin family of proteins make up the matrix and are highly conserved in evolution. During mitosis, the lamina matrix is reversibly disassembled as the lamin proteins are phosphorylated. Lamin proteins are thought to be involved in nuclear stability, chromatin structure and gene expression. Vertebrate lamins consist of two types, A and B. Alternative splicing results in multiple transcript variants.

For Research Use Only