

AF/LE Purified Anti-Mouse Ly-6G/Ly-6C (Gr-1) Antibody[RB6-8C5]

Catalog Number: GF11200

Note: Centrifuge before opening to ensure complete recovery of vial contents.

Description

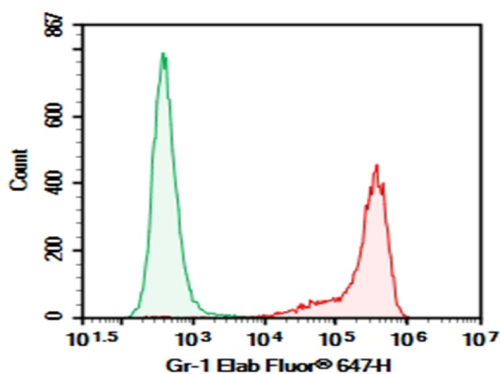
Reactivity	Mouse
Immunogen	Recombinant Mouse Ly-6G/Ly-6C (Gr-1) protein
Host	Rat
Isotype	Rat IgG2b, κ
Clone	RB6-8C5
Purification	>98%, Protein A/G purified
Conjugation	None (AF/LE)
Buffer	Sterile PBS, pH 7.2. < 1.0 EU per mg of the antibody as determined by the LAL method.

Applications

Recommended Dilution

FCM	2 $\mu\text{g/mL}$ (0.5×10^6 - 1×10^6 cells)
-----	---

Data



C57BL/6 Mouse bone marrow cells were stained with 0.2 μg AF/LE Purified Anti-Mouse Ly-6G/Ly-6C (Gr-1) Antibody[RB6-8C5] (Right) and 0.2 μg Rat IgG2b, κ Isotype Control (Left), followed by Elab Fluor® 647-conjugated Goat Anti-Rat IgG Secondary Antibody.

Preparation & Storage

Storage	Store at 4°C valid for 12 months or -20°C valid for long term storage, avoid freeze / thaw cycles. This preparation contains no preservatives, thus it should be handled under aseptic conditions.
Shipping	Ice bag

Background

Gr-1 is a 21-25 kD protein also known as Ly-6G/Ly-6C. This myeloid differentiation antigen is a glycosylphosphatidylinositol (GPI)-linked protein expressed on granulocytes and macrophages. In bone marrow, the expression levels of Gr-1 directly correlate with granulocyte differentiation and maturation; Gr-1 is also transiently expressed on bone marrow cells in the monocyte lineage. Immature Myeloid Gr-1+ cells play a role in the development of antitumor immunity.