

## SEH1L Polyclonal Antibody

catalog number: E-AB-92316

**Note:** Centrifuge before opening to ensure complete recovery of vial contents.

### Description

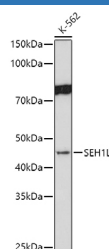
<b>Reactivity</b>	Human;Mouse;Rat
<b>Immunogen</b>	Recombinant fusion protein of human SEH1L
<b>Host</b>	Rabbit
<b>Isotype</b>	IgG
<b>Purification</b>	Affinity purification
<b>Buffer</b>	Phosphate buffered solution, pH 7.4, containing 0.05% stabilizer and 50% glycerol.

### Applications

### Recommended Dilution

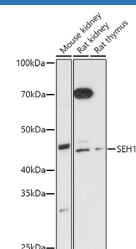
<b>WB</b>	1:500-1:2000
-----------	--------------

### Data



Western blot analysis of extracts of K-562 cells using SEH1L Polyclonal Antibody at 1:1000 dilution.

**Observed-MV:45 kDa**  
**Calculated-MV:39 kDa**



Western blot analysis of extracts of various cell lines using SEH1L Polyclonal Antibody at 1:1000 dilution.

**Observed-MV:45 kDa**  
**Calculated-MV:39 kDa**

### Preparation & Storage

<b>Storage</b>	Store at -20°C Valid for 12 months. Avoid freeze / thaw cycles.
<b>Shipping</b>	The product is shipped with ice pack, upon receipt, store it immediately at the temperature recommended.

### Background

The protein encoded by this gene is part of a nuclear pore complex, Nup107-160. This protein contains WD repeats and shares 34% amino acid identity with yeast Seh1 and 30% identity with yeast Sec13. All constituents of the Nup107-160 complex, including this protein, specifically localize to kinetochores in mitosis. Two alternatively spliced transcript variants encoding distinct isoforms have been found for this gene.

### For Research Use Only