

Elab Fluor® Red 780 Anti-Mouse CD5 Antibody[53-7.3]

Catalog Number: E-AB-F1185S

Note: Centrifuge before opening to ensure complete recovery of vial contents.

Description

Reactivity	Mouse
Host	Rat
Isotype	Rat IgG2a, κ
Clone No.	53-7.3
Isotype Control	Elab Fluor® Red 780 Rat IgG2a, κ Isotype Control[2A3] [Product E-AB-F09832S]
Conjugation	Elab Fluor® Red 780
Conjugation Information	Elab Fluor® Red 780 is designed to be excited by the Red (627-640 nm) laser and detected using an optical filter centered near 770 nm (e.g., a 780/60 nm bandpass filter).
Storage Buffer	Phosphate buffered solution, pH 7.2, containing 0.09% sodium azide and 1% BSA.

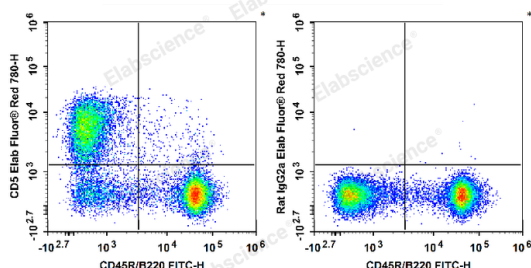
Applications

Recommended usage

FCM

Each lot of this antibody is quality control tested by flow cytometric analysis. **The amount of the reagent is suggested to be used 5 μL of antibody per test (million cells in 100 μL staining volume or per 100 μL of whole blood).** Please check your vial before the experiment. Since applications vary, the appropriate dilutions must be determined for individual use.

Data



C57BL/6 murine splenocytes are stained with FITC Anti-Mouse CD45R/B220 Antibody and Elab Fluor® Red 780 Anti-Mouse CD5 Antibody (Left). Splenocytes are stained with FITC Anti-Mouse CD45R/B220 Antibody and Elab Fluor® Red 780 Rat IgG2a, κ Isotype Control (Right).

Preparation & Storage

Storage	Keep as concentrated solution. This product can be stored at 2-8°C for 12 months. Please protected from prolonged exposure to light and do not freeze.
Shipping	Ice bag

Antigen Information

Alternate Names	CD5;Cd5;Ly-1;Lymphocyte antigen 1;Lyt-1
Uniprot ID	P13379
Gene ID	12507

For Research Use Only

Background

CD5 is a 67 kD protein, also known as Lyt-1, Ly-1, T1, Tp67, or Ly-12. It is a member of the scavenger receptor cysteine-rich protein superfamily (SRCR) and primarily expressed on thymocytes, T cells, and B-1 cells. Although mature α/β T cells express high levels of CD5, very few γ/δ T cells express this antigen. The interaction of CD5 with CD72, gp35-37, TCR, or BCR is involved in T and B cell activation.