

LC3B/MAP1LC3B Polyclonal Antibody

catalog number: AN100006P

Note: Centrifuge before opening to ensure complete recovery of vial contents.

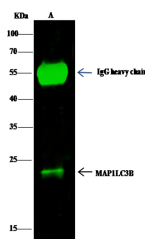
Description

Reactivity	Human
Immunogen	Recombinant Human LC3B / MAP1LC3B protein
Host	Rabbit
Isotype	IgG
Purification	Protein A & Antigen Affinity
Buffer	0.2 µm filtered solution in PBS

Applications

WB	1:500-1:2000
IP	4-6 µL/mg of lysate

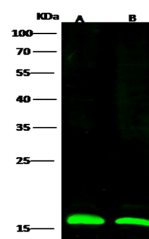
Data



Immunoprecipitation analysis using 2 µL anti-MAP1LC3B rabbit polyclonal antibody and 15 µL of 50 % Protein G agarose. Western blot was performed from the immunoprecipitate using MAP1LC3B rabbit polyclonal antibody at a dilution of 1:200. Lane A: 0.5 mg 293T Whole Cell Lysate

Observed-MW:16 kDa

Calculated-MW:16 kDa



Western Blot with LC3B / MAP1LC3B Polyclonal Antibody at dilution of 1:500. Lane A: Mouse brain Tissue Lysate, Lane B: Rat brain Tissue Lysate, Lysates/proteins at 30 µg per lane.

Observed-MW:16 kDa

Calculated-MW:16 kDa

Preparation & Storage

Storage	This antibody can be stored at 2°C-8°C for one month without detectable loss of activity. Antibody products are stable for twelve months from date of receipt when stored at -20°C to -80°C. Preservative-Free. Avoid repeated freeze-thaw cycles.
Shipping	Ice bag

Background

The product of this gene is a subunit of neuronal microtubule-associated MAP1A and MAP1B proteins, which are involved in microtubule assembly and important for neurogenesis. Studies on the rat homolog implicate a role for this gene in autophagy, a process that involves the bulk degradation of cytoplasmic component.

For Research Use Only