

Recombinant Human Dipeptidase 1/DPEP1 Protein (His Tag)

Catalog Number: PKSH032356

Note: Centrifuge before opening to ensure complete recovery of vial contents.

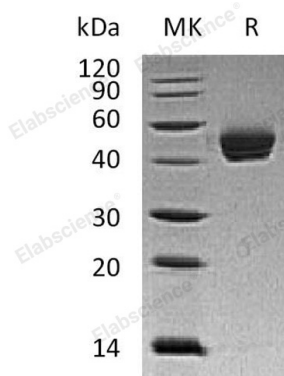
Description

Species	Human
Source	HEK293 Cells-derived Human Dipeptidase 1;DPEP1 protein Asp17-Ser385, with an C-terminal His
Calculated MW	42.1 kDa
Observed MW	41 kDa
Accession	P16444
Bio-activity	Not validated for activity

Properties

Purity	> 95 % as determined by reducing SDS-PAGE.
Concentration	Subject to label value.
Endotoxin	< 1.0 EU per µg of the protein as determined by the LAL method.
Storage	Store at < -20°C, stable for 6 months. Please minimize freeze-thaw cycles.
Shipping	This product is provided as liquid. It is shipped at frozen temperature with blue ice/gel packs. Upon receipt, store it immediately at < - 20°C.
Formulation	Supplied as a 0.2 µm filtered solution of PBS, 10% Glycerol, pH 7.4.

Data



> 95 % as determined by reducing SDS-PAGE.

Background

Dipeptidase 1 (DPEP1) is a kidney membrane enzyme that belongs to the peptidase M19 family. DPEP1 is a homodimer and is inhibited by L-penicillamine. DPEP1 hydrolyzes a variety of dipeptides and is implicated in renal metabolism of glutathione and its conjugates. DPEP1 is responsible for hydrolysis of the beta-lactam ring of antibiotics; such as penem and carbapenem. DPEP1 may play an important role in the regulation of leukotriene activity. DPEP1 expression in cancer is significantly higher than that in normal tissue. However, DPEP1 expression decreased with pathological differentiation; lymph-node and distant metastasis.