

## HOMER1 Polyclonal Antibody

**catalog number: E-AB-11296**

**Note:** Centrifuge before opening to ensure complete recovery of vial contents.

### Description

<b>Reactivity</b>	Human;Mouse;Rat
<b>Immunogen</b>	Recombinant protein of human HOMER1
<b>Host</b>	Rabbit
<b>Isotype</b>	IgG
<b>Purification</b>	Affinity purification
<b>Buffer</b>	Phosphate buffered solution, pH 7.4, containing 0.05% stabilizer and 50% glycerol.

### Applications

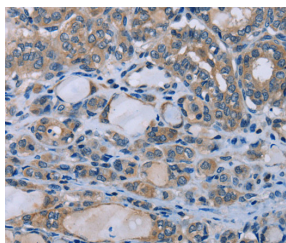
Applications	Recommended Dilution
<b>WB</b>	1:500-1:2000
<b>IHC</b>	1:50-1:200

### Data



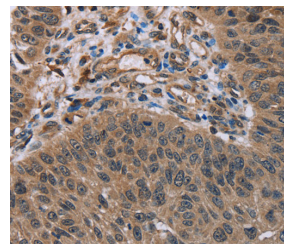
Western Blot analysis of Mouse brain tissue using HOMER1 Polyclonal Antibody at dilution of 1:400

**Calculated-MW:40 kDa**



Immunohistochemistry of paraffin-embedded Human thyroid cancer using HOMER1 Polyclonal Antibody at dilution of

1:50



Immunohistochemistry of paraffin-embedded Human lung cancer using HOMER1 Polyclonal Antibody at dilution of

1:50

### Preparation & Storage

<b>Storage</b>	Store at -20°C Valid for 12 months. Avoid freeze / thaw cycles.
<b>Shipping</b>	The product is shipped with ice pack, upon receipt, store it immediately at the temperature recommended.

### Background

This gene encodes a member of the homer family of dendritic proteins. Members of this family regulate group 1 metabotropic glutamate receptor function.

### For Research Use Only