

# Recombinant Human HRAS/GTPase Hras protein (His Tag)

Catalog Number: PDEH101024



**Note:** Centrifuge before opening to ensure complete recovery of vial contents.

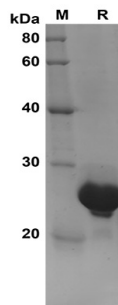
## Description

<b>Species</b>	Human
<b>Mol_Mass</b>	20.4 kDa
<b>Accession</b>	P01112
<b>Bio-activity</b>	Not validated for activity

## Properties

<b>Purity</b>	> 95% as determined by reducing SDS-PAGE.
<b>Endotoxin</b>	< 10 EU/mg of the protein as determined by the LAL method
<b>Storage</b>	Generally, lyophilized proteins are stable for up to 12 months when stored at -20 to -80 °C. Reconstituted protein solution can be stored at 4-8°C for 2-7 days. Aliquots of reconstituted samples are stable at < -20°C for 3 months.
<b>Shipping</b>	This product is provided as lyophilized powder which is shipped with ice packs.
<b>Formulation</b>	Lyophilized from a 0.2 µm filtered solution in PBS with 5% Trehalose and 5% Mannitol.
<b>Reconstitution</b>	It is recommended that sterile water be added to the vial to prepare a stock solution of 0.5 mg/mL. Concentration is measured by UV-Vis.

## Data



SDS-PAGE analysis of Human HRAS proteins, 2µg/lane of Recombinant Human HRAS proteins was resolved with SDS-PAGE under reducing conditions, showing bands at 25 KD.

## Background

HRas, also known as HRAS, belongs to the small GTPase superfamily, Ras family and is widely expressed. It functions in signal transduction pathways. HRas can bind GTP and GDP, and they have intrinsic GTPase activity. It undergoes a continuous cycle of de- and re-palmitoylation, which regulates its rapid exchange between the plasma membrane and the Golgi apparatus. Defects in HRAS are the cause of faciocutaneouskeletal syndrome (FCSS). FCSS is a rare condition characterized by prenatally increased growth, postnatal growth deficiency, mental retardation, distinctive facial appearance, cardiovascular abnormalities, tumor predisposition, skin and musculoskeletal abnormalities. Defects in HRAS also can cause congenital myopathy with excess of muscle spindles. HRAS deficiency may be a cause of susceptibility to Hurthle cell thyroid carcinoma. It has been shown that defects in HRAS can cause susceptibility to bladder cancer which is a malignancy.

## For Research Use Only

A Reliable Research Partner in Life Science and Medicine  
Tel: 400-999-2100

Email: [techsupport@elabscience.cn](mailto:techsupport@elabscience.cn)

Web: [www.elabscience.cn](http://www.elabscience.cn)

Rev. V1.3