

# Recombinant Human ACTA2 protein (His tag)

Catalog Number:PDEH100249



**Note:** Centrifuge before opening to ensure complete recovery of vial contents.

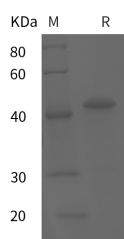
## Description

<b>Synonyms</b>	a actin;AAT6;Actin aortic smooth muscle;ACTSA;GIG46;Growth inhibiting gene 46;MYMY5
<b>Species</b>	Human
<b>Expression Host</b>	E.coli
<b>Sequence</b>	Cys 2-Phe 377
<b>Accession</b>	P62736
<b>Calculated Molecular Weight</b>	41.3 kDa
<b>Observed molecular weight</b>	42 kDa
<b>Tag</b>	N-His

## Properties

<b>Purity</b>	> 95 % as determined by reducing SDS-PAGE.
<b>Endotoxin</b>	Please contact us for more information.
<b>Storage</b>	Generally, lyophilized proteins are stable for up to 12 months when stored at -20 to -80°C. Reconstituted protein solution can be stored at 4-8°C for 2-7 days. Aliquots of reconstituted samples are stable at < -20°C for 3 months.
<b>Shipping</b>	This product is provided as lyophilized powder which is shipped with ice packs.
<b>Formulation</b>	Lyophilized from sterile PBS, pH 7.4. Normally 5 % - 8 % trehalose, mannitol and 0.01 % Tween80 are added as protectants before lyophilization. Please refer to the specific buffer information in the printed manual.
<b>Reconstitution</b>	Please refer to the printed manual for detailed information.

## Data



> 95 % as determined by reducing SDS-PAGE.

## Background

Actin proteins are major components of the eukaryotic cytoskeleton. At least six vertebrate actin isoforms have been identified. The cytoplasmic  $\beta$ - and  $\gamma$ -actin proteins are referred to as “non-muscle” actin proteins as they are predominantly expressed in non-muscle cells where they control cell structure and motility. The  $\alpha$ -cardiac and  $\alpha$ -skeletal actin proteins are expressed in striated cardiac and skeletal muscles, respectively. The smooth muscle  $\alpha$ -actin and  $\gamma$ -actin proteins are found primarily in vascular smooth muscle and enteric smooth muscle, respectively. The  $\alpha$ -smooth muscle actin (ACTA2) is also known as aortic smooth muscle actin. These actin isoforms regulate the contractile potential of muscle cells.

## For Research Use Only

A Reliable Research Partner in Life Science and Medicine

Toll-free: 1-888-852-8623

Web: [www.elabscience.com](http://www.elabscience.com)

Tel: 1-832-243-6086

Email: [techsupport@elabscience.com](mailto:techsupport@elabscience.com)

Fax: 1-832-243-6017