

## Phospho-CREB1 (Ser133) Polyclonal Antibody

**catalog number:** E-AB-20849

**Note:** Centrifuge before opening to ensure complete recovery of vial contents.

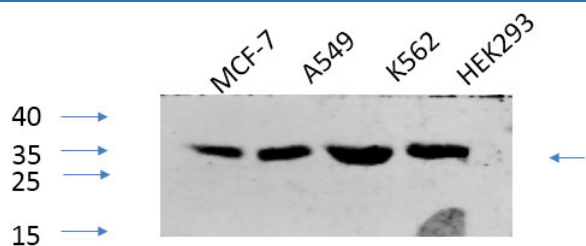
### Description

<b>Reactivity</b>	Human;Mouse;Rat
<b>Immunogen</b>	Synthesized peptide derived from human CREB-1 around the phosphorylation site of Ser133
<b>Host</b>	Rabbit
<b>Isotype</b>	IgG
<b>Purification</b>	Affinity purification
<b>Buffer</b>	Phosphate buffered solution, pH 7.4, containing 0.05% stabilizer, 0.5% protein protectant and 50% glycerol.

### Applications

Applications	Recommended Dilution
<b>WB</b>	1:500-1:2000
<b>IHC</b>	1:100-1:300
<b>IF</b>	1:100-1:300

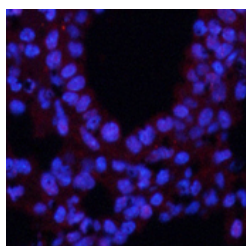
### Data



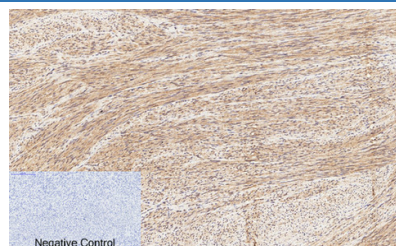
Western Blot analysis of various cells using Phospho-CREB1 (Ser133) Polyclonal Antibody at dilution of 1:1000

**Observed-MW:37 kDa**

**Calculated-MW:37 kDa**



Immunofluorescence analysis of Mouse lung tissue using Phospho-CREB1 (Ser133) Polyclonal Antibody at dilution of 1:200



Immunohistochemistry of paraffin-embedded Human uterus tissue using Phospho-CREB1 (Ser133) Polyclonal Antibody at dilution of 1:200

### Preparation & Storage

<b>Storage</b>	Store at -20°C Valid for 12 months. Avoid freeze / thaw cycles.
<b>Shipping</b>	The product is shipped with ice pack, upon receipt, store it immediately at the temperature recommended.

### Background

### For Research Use Only

This protein binds the cAMP response element (CRE), a sequence present in many viral and cellular promoters. CREB stimulates transcription on binding to the CRE. Transcription activation is enhanced by the TORC coactivators which act independently of Ser-133 phosphorylation. Implicated in synchronization of circadian rhythmicity.

---

## For Research Use Only

Toll-free: 1-888-852-8623  
Web: [www.elabscience.com](http://www.elabscience.com)

Tel: 1-832-243-6086  
Email: [techsupport@elabscience.com](mailto:techsupport@elabscience.com)

Fax: 1-832-243-6017

Rev. V1.9